



Contribution by AXA Financial to AXA International Financial Reporting Standards (“IFRS”) Results Financial Supplement

Full Year 2007

For questions and concerns regarding this financial supplement please contact:
George Guerrero, Vice President, 212-314-2868
<http://www.axa.com/en/investor>

TABLE OF CONTENTS

HIGHLIGHTS.....	2 - 12
AXA FINANCIAL OPERATIONS	
Assets Under Management.....	13
Consolidating Balance Sheets.....	14
Non-Subordinated and Subordinated Debt.....	18
Consolidating Income Statements - Management Format.....	19
FINANCIAL ADVISORY/INSURANCE (LIFE & SAVINGS - US)	
Consolidating Financial Advisory/Insurance Income Statement - Management Format.....	20
Financial Advisory/Insurance - Analysis of Net Revenues.....	21
Financial Advisory/Insurance Sales - Total	22
Financial Advisory/Insurance Sales - First	23
Consolidated Product Sales	24
Financial Advisory/Insurance - Deferred Policy Acquisition Costs.....	25
Financial Advisory/Insurance - Future Policy Benefits and Policyholders' Account Balances	27
Financial Advisory/Insurance - GMDB/GMIB Reserves.....	30
Underlying Investment Results by Asset Category Annualized Yields.....	31
Analysis of General Account Invested Assets.....	33
INVESTMENT MANAGEMENT (ASSET MANAGEMENT - ALLIANCEBERNSTEIN)	
Investment Management Statement of IFRS Underlying Earnings.....	34
AllianceBernstein - Assets Under Management Reconciliation.....	35
AllianceBernstein - Assets Under Management By Category.....	36

CONTRIBUTION BY AXA FINANCIAL TO AXA EARNINGS

All amounts in this document do not include the results of MONY companies prior to the second half of 2004.

AXA prepares its consolidated financial statements in accordance with International Financial Reporting Standards ("IFRS"). All segment and earnings results reflected within this document are presented in accordance with IFRS and are in US\$ unless otherwise stated.

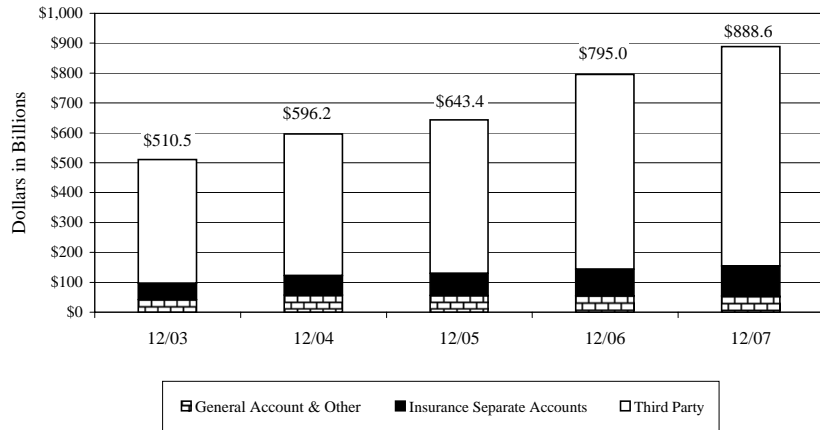
Underlying earnings are adjusted earnings, excluding net capital gains attributable to shareholders. Adjusted earnings represent net income before the impact of exceptional operations, goodwill and related intangibles amortization/impairments, and profit or loss on financial assets under the fair value option and derivatives.

After-tax Contribution to AXA IFRS Underlying Earnings, Adjusted Earnings and Net Earnings by Segmen

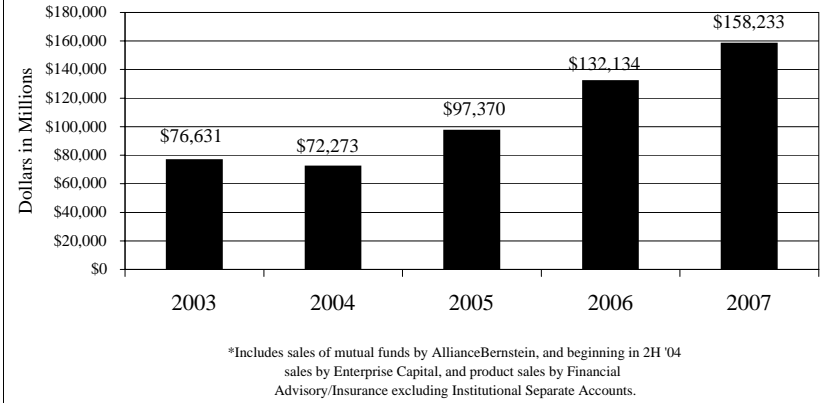
	<i>Year ended December 31, 2007</i>				<i>Year ended December 31, 2006</i>			
	<i>Financial Advisory/ Insurance (Life & Savings - US)</i>	<i>Investment Management (Asset Management - AllianceBernstein)</i>	<i>AXF Holding Company</i>	<i>Total</i>	<i>Financial Advisory/ Insurance (Life & Savings - US)</i>	<i>Investment Management (Asset Management - AllianceBernstein)</i>	<i>AXF Holding Company</i>	<i>Total</i>
<i>(In US\$ millions, except lines 7.8 & 9)</i>								
1 Contribution to AXA IFRS underlying earnings	\$1,209.8	\$430.5	(\$140.9)	\$1,499.4	\$1,255.8	\$379.1	(\$170.0)	\$1,464.9
2 Realized capital gains (losses) attributable to shareholders net of DAC, VOBA and policyholder rights	(44.2)	1.5	(0.6)	(43.3)	37.4	1.2	0.1	38.7
3 Contribution to AXA IFRS adjusted earnings	\$1,165.6	\$432.0	(\$141.5)	\$1,456.1	\$1,293.2	\$380.3	(\$169.9)	\$1,503.6
4 Amortization of acquisition related intangible assets	(29.4)	-	-	(29.4)	(12.5)	-	-	(12.5)
5 Profit or loss on financial assets (under fair value option) and derivatives	55.4	-	(15.7)	39.7	(0.2)	-	5.2	5.0
6 Exceptional operations:								
- dilution gains on issuance of AllianceBernstein units	-	(8.1)	-	(8.1)	-	107.6	11.6	119.2
- gains (losses) on sale of Frontier Trust (2007), Advest and DLJ (2006)	-	-	6.2	6.2	-	-	58.0	58.0
- gain on transfer of AllianceBernstein cash management business, group share	-	5.5	-	5.5	-	6.6	-	6.6
- Enterprise transaction costs	(9.6)	-	-	(9.6)	-	-	-	-
7 Contribution to AXA IFRS Net Earnings	\$1,182.0	\$429.4	(\$151.0)	\$1,460.4	\$1,280.5	\$494.5	(\$95.1)	\$1,679.9
8 Contribution to AXA IFRS underlying earnings in Euros	EURO 883	EURO 314	(EURO 102)	EURO 1,095	EURO 1,000	EURO 302	(EURO 135)	EURO 1,167
9 Contribution to AXA IFRS adjusted earnings in Euros	EURO 851	EURO 315	(EURO 103)	EURO 1,063	EURO 1,029	EURO 303	(EURO 135)	EURO 1,198
10 Contribution to AXA IFRS Net Earnings, Group Share in Euros	EURO 863	EURO 313	(EURO 110)	EURO 1,066	EURO 1,019	EURO 393	(EURO 76)	EURO 1,337

	<i>December 31, 2007</i>		<i>December 31, 2006</i>	
	<i>Average</i>	<i>End of Period</i>	<i>Average</i>	<i>End of Period</i>
11 US\$/EURO EXCHANGE RATES	0.730	0.679	0.796	0.759

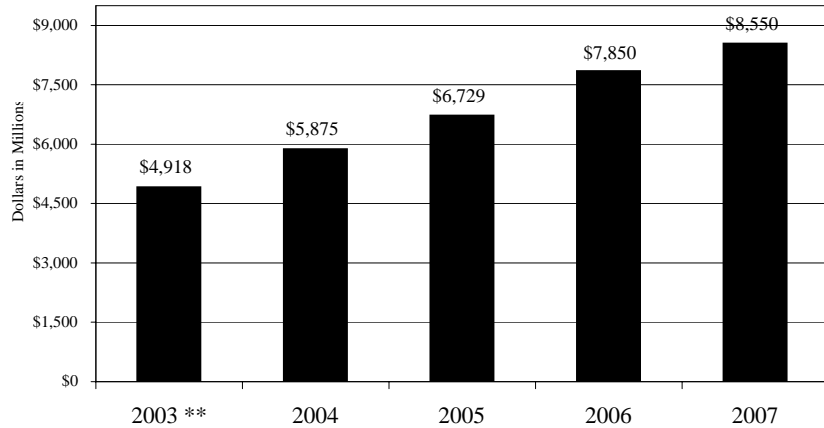
Assets Under Management



Consolidated Product Sales*



Consolidated Net Revenues*



*Based upon a margin analysis of earnings format which is different from revenues as reported by AXI
 ** French GAAP Basis.

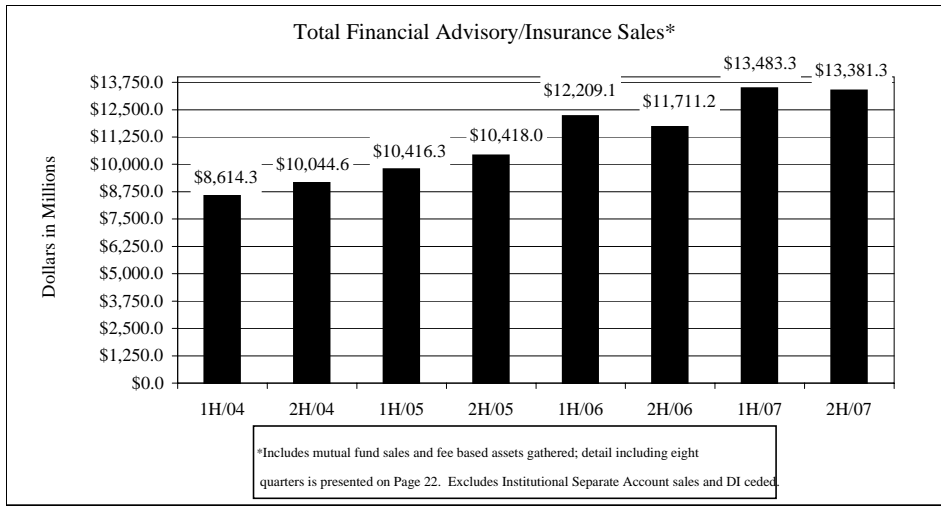
AXA FINANCIAL, INC.
FINANCIAL ADVISORY/INSURANCE
IFRS Underlying After-Tax Earnings - Contribution by Product Line

<i>Dollars in Millions</i>	<i>Year ended December 31</i>	
	<i>2007</i>	<i>2006</i>
1 Traditional Life (pg. 20 ln 17)	\$110.4	\$157.4
2 Var. & Int. Sens. Life (pg. 20 ln 17)	267.1	199.7
3 Annuities (pg. 20 ln 17)	814.1	783.6
4 Other (pg. 20 ln 17)	18.2	115.1 *
5 Total Insurance (pg. 20 ln 17)	\$1,209.8	\$1,255.8

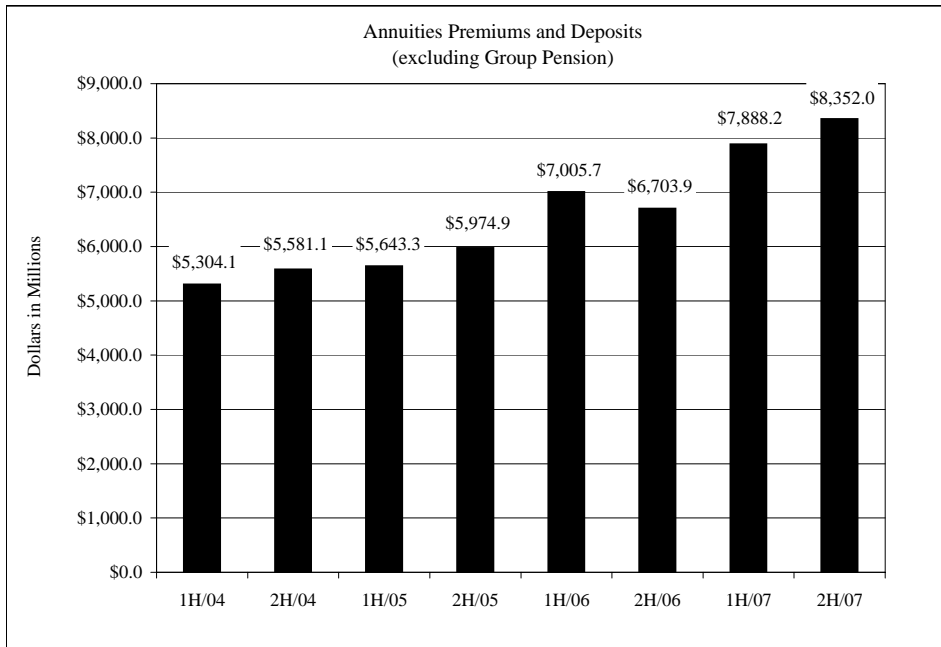
* Includes a one-time tax benefit amount of \$115 million in connection with the settlement of an IRS audit of the 1997-2001 tax years.

Total Sales by Distribution Channel

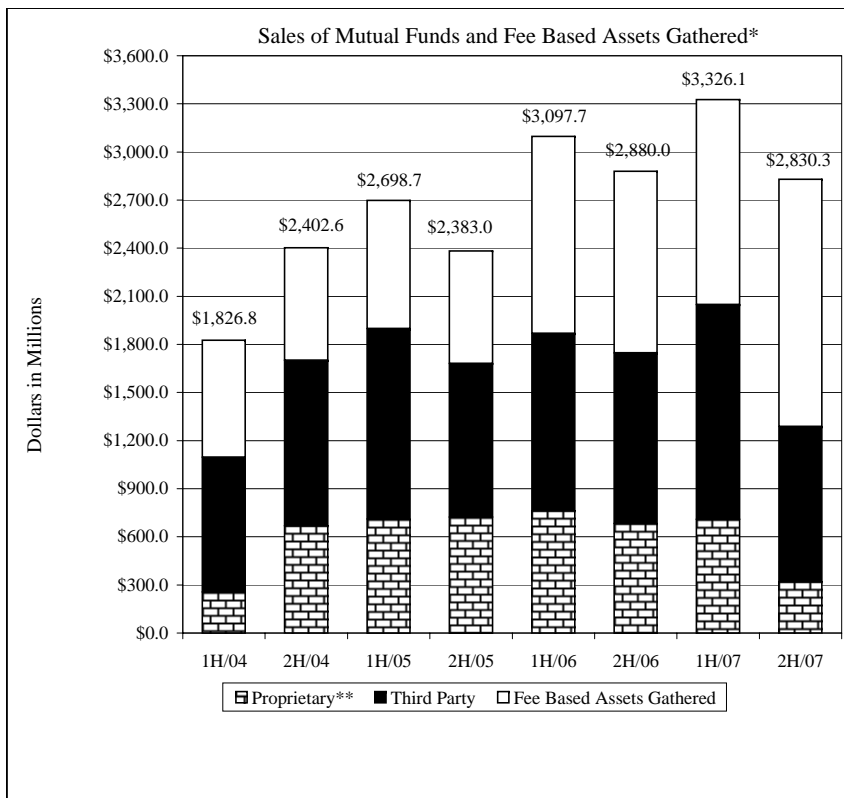
<i>Dollars in Millions</i>	<i>Year ended December 31</i>		<i>Six months ended December 31</i>	
	<i>2007</i>	<i>2006</i>	<i>2007</i>	<i>2006</i>
6 Annuities (excl. Group Pensions) (pg. 22, ln 7 & 8)	\$6,681.7	\$6,132.4	\$3,318.8	\$2,985.7
7 Group Pension (pg. 22, ln 9)	365.4	357.6	172.1	163.7
8 Subtotal	7,047.1	6,490.0	3,490.9	3,149.4
9 Mutual funds & fee based assets gathered (pg. 22, ln 16)	5,651.1	5,130.2	2,712.1	2,472.4
10 Life (pg. 22, ln 6)	2,885.8	2,919.3	1,438.6	1,457.0
11 Other (pg. 22, ln 10 & 11)	263.3	270.9	\$134.7	\$142.6
12 Total retail (pg. 22, ln 17)	15,847.3	14,810.4	7,776.3	7,221.4
13 Variable annuities - financial planners (pg. 22, ln 18)	3,425.0	2,560.9	\$1,806.4	\$1,300.5
14 Variable annuities - financial institutions (pg. 22, ln 19)	2,556.2	2,007.2	\$1,336.0	\$956.9
15 Variable annuities - broker/dealers (pg. 22, ln 20)	3,571.3	2,997.1	\$1,887.2	\$1,456.5
16 Fixed annuities (pg. 22, ln 22)	6.0	12.0	\$3.6	\$4.3
17 Mutual funds & fee based assets gathered (pg. 22, ln 30)	505.3	847.5	\$118.2	\$407.6
18 Life (pg. 22, ln 28)	953.5	685.2	\$453.6	\$364.0
19 Total wholesale (pg. 22, ln 31)	11,017.3	9,109.9	5,605.0	4,489.8
20 Total Sales (pg. 22, ln 39)	26,864.6	23,920.3	13,381.3	11,711.2
21 Institutional Separate Accounts	255.3	276.2	133.9	158.2
22 DI ceded and other	119.8	129.0	60.2	63.9
23 Total AXA Basis Sales	27,239.7	24,325.5	13,575.4	11,933.3
24 Less: Mutual funds & fee based assets gathered (pg.22, ln 38)	(6,156.4)	(5,977.7)	(2,830.3)	(2,880.0)
25 AXA Basis Gross Premiums	21,083.3	18,347.8	10,745.1	9,053.3
26 Other fee revenues	1,166.8	985.4	593.5	516.3
27 AXA Basis Gross Revenues	\$22,250.1	\$19,333.2	\$11,338.6	\$9,569.6



	% Change	\$ Change
2H/07 over 2H/06	14.3%	1,670.1



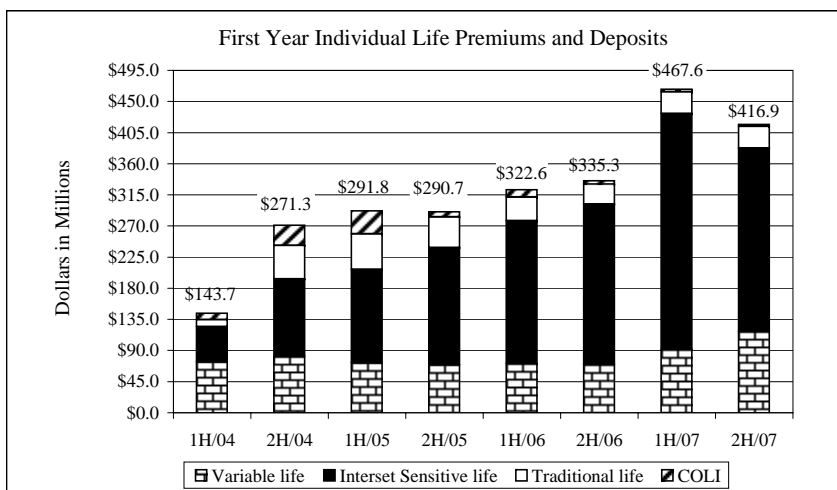
	% Change	\$ Change
2H/07 over 2H/06	19.7%	1,648.1



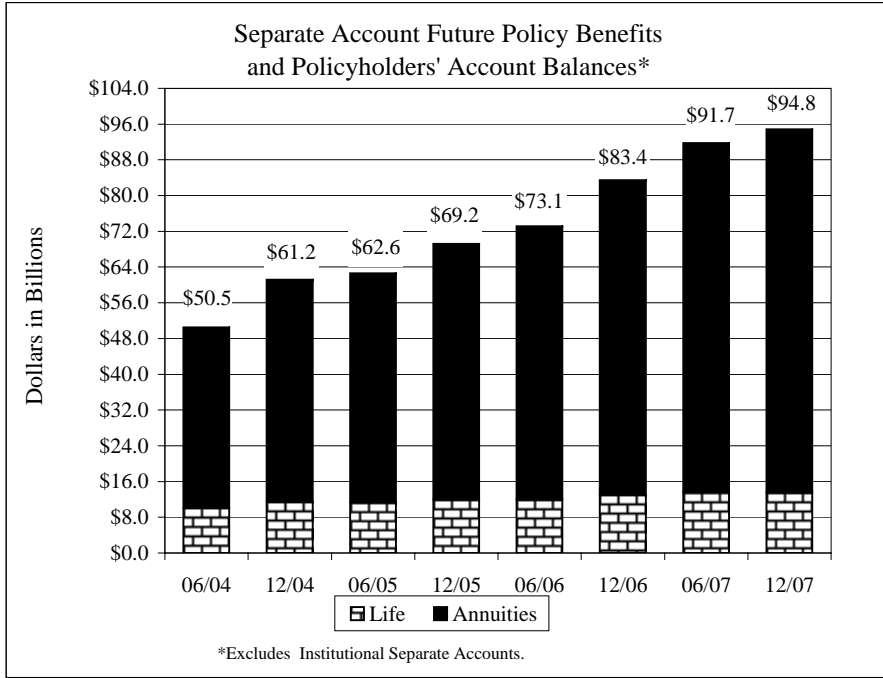
	% Change	\$ Change
Proprietary**		
2H/07 over 2H/06	-53.2%	(362.3)
Third party		
2H/07 over 2H/06	-9.0%	(95.7)
Fee based assets gathered		
2H/07 over 2H/06	36.0%	408.3
Total		
2H/07 over 2H/06	-1.7%	(49.7)

*Includes mutual funds sold through brokerage accounts and gross assets gathered in fee based accounts. Detail including eight quarters is presented on page 22.

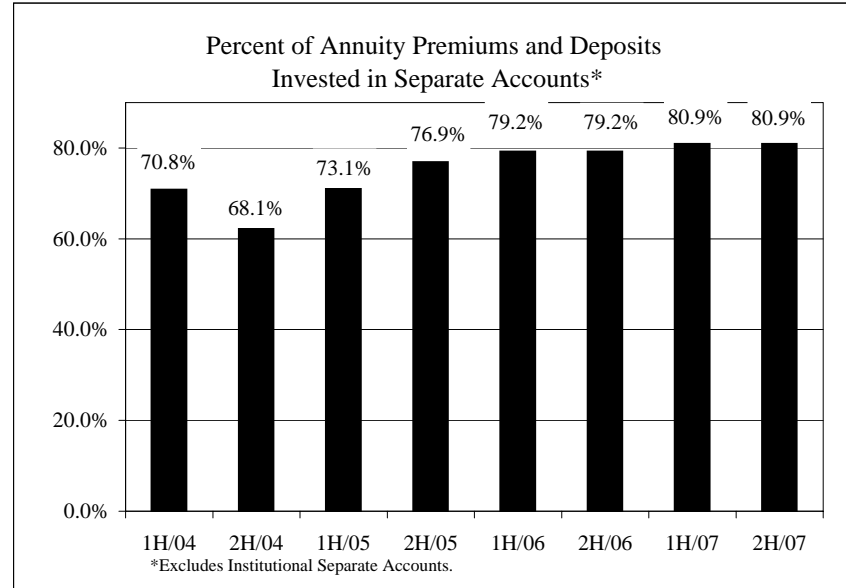
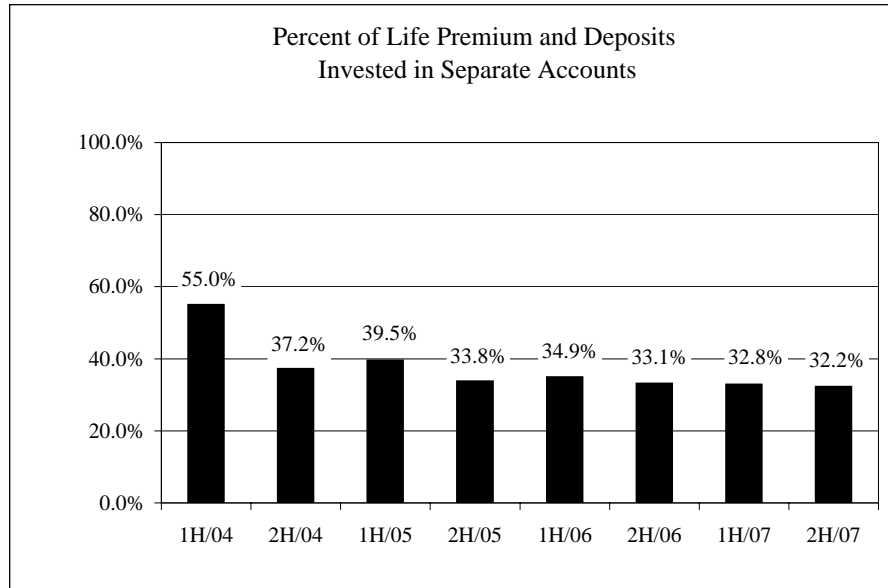
**Proprietary includes AllianceBernstein and Enterprise/AXA Equitable managed mutual funds (only up to the date of transfer to Goldman Sachs in June 2007).



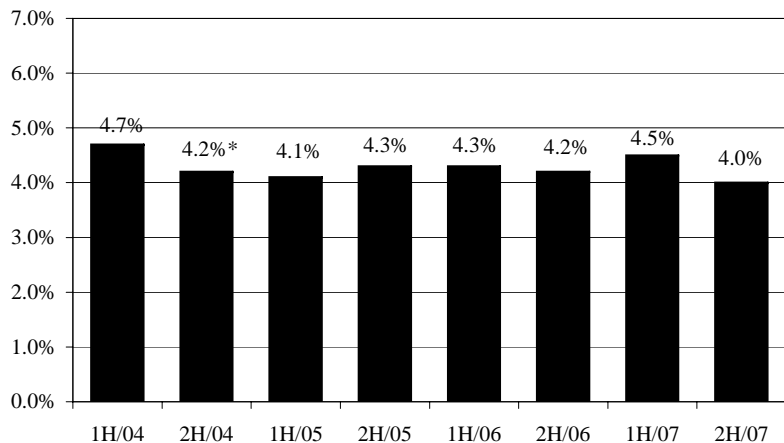
	% Change	\$ Change
Variable life		
2H/07 over 2H/06	68.9%	48.0
Interest sensitive life		
2H/07 over 2H/06	14.1%	32.7
Traditional life		
2H/07 over 2H/06	11.6%	3.3
COLI		
2H/07 over 2H/06	-46.2%	(2.4)
Total		
2H/07 over 2H/06	24.3%	81.6



	<u>% Change</u>
Life	
12'07 over 12'06	3.6%
Annuities	
12'07 over 12'06	15.6%
Total	
12'07 over 12'06	13.7%

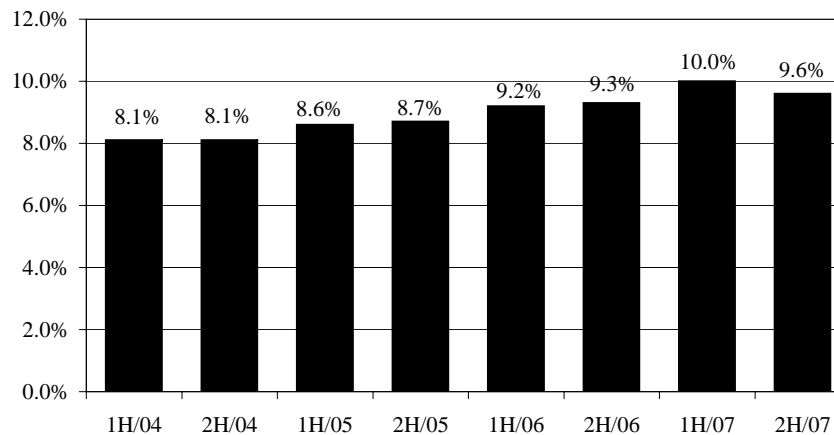


Individual Life Surrender Rates (Annualized)

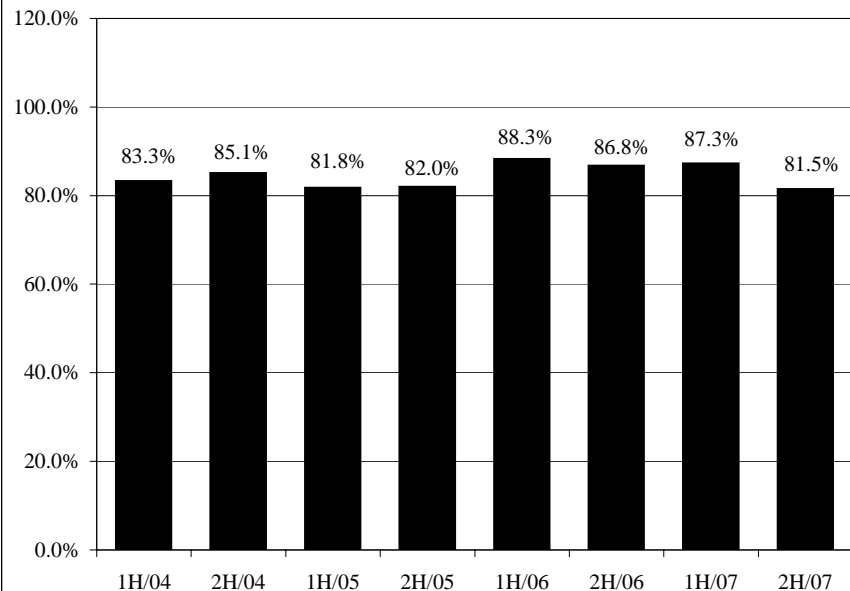


*Excludes impact of partial withdrawal of a single large COLI contract of \$193 million

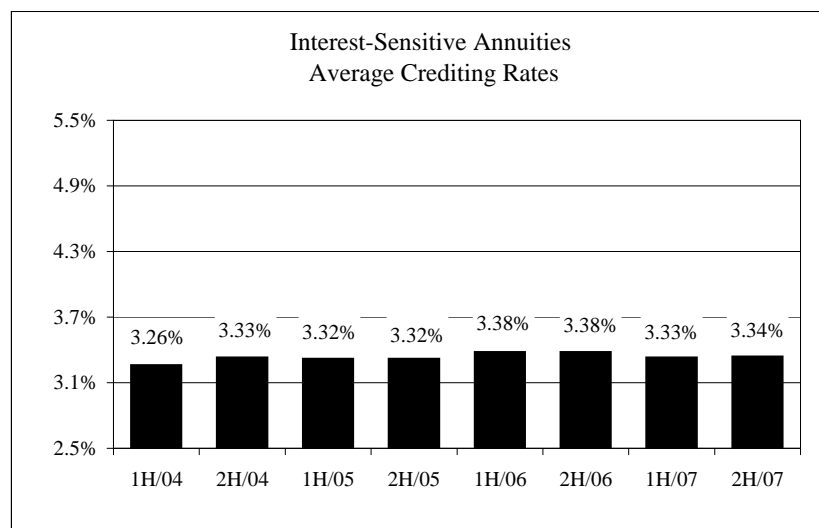
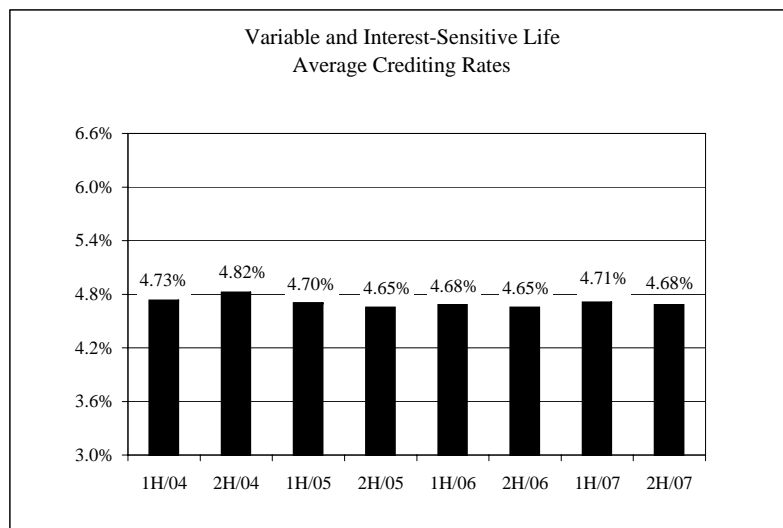
Annuities Surrender Rates (Annualized)



Individual Life Insurance Mortality Compared to "Benchmark" ⁽¹⁾



⁽¹⁾ Benchmark life Insurance mortality is based upon AXA Equitable experience from 1993 to 1997.



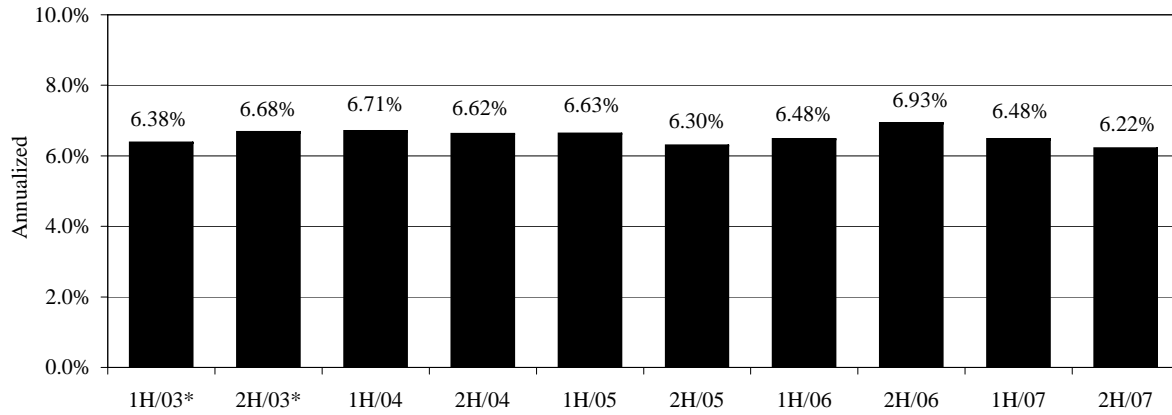
**Financial Advisory/Insurance
Net Underlying Earnings Margin Ratio**

	<i>Year ended December 31</i>	
	<u>2007</u>	<u>2006</u>
1 Underlying revenues (pg. 20 ln 4)*	\$4,057.9	\$3,924.4
2 Expenses including DAC/VOBA (pg. 20 ln 14)	\$2,350.2	\$2,249.4
3 AXA Group Underlying Earnings Cost Income Ratio including DAC and unearned revenue reserve (ln 2 / ln 1)	58%	57%
4 Net underlying earnings margin ratio (100% - ln 3)	42%	43%
Reconciliation to AXA Group Underlying Earnings Cost Income Ratio excluding DAC and unearned revenue reserve		
5 Underlying revenues (pg. 20 ln 4)*	\$4,057.9	\$3,924.4
6 Less : Change in unearned revenue reserve	<u>(8.2)</u>	<u>(30.5)</u>
7 Underlying revenues used in AXA Group Cost Income Ratio	<u>\$4,066.1</u>	<u>\$3,954.9</u>
8 Expenses (pg. 20 ln 14)	\$2,350.2	\$2,249.4
9 Add: DAC Capitalization (pg. 20 lns 7 & 10)	1,805.8	1,475.3
10 Less : Amortization of DAC and VOBA (pg. 20 ln 12 & ln 13)	<u>(959.7)</u>	<u>(897.9)</u>
11 Expenses used in AXA Group Cost Income Ratio	<u>\$3,196.3</u>	<u>\$2,826.8</u>
12 AXA Group Underlying Earnings Cost Income Ratio excluding DAC and unearned revenue reserve (ln 11 / ln 7)	79%	71%

* Based upon a margin analysis of earnings format which is different from the gross revenues as reported by AXA.

HIGHLIGHTS

General Account (Total Company) - Investment Results
Yield, Net of Investment Fees

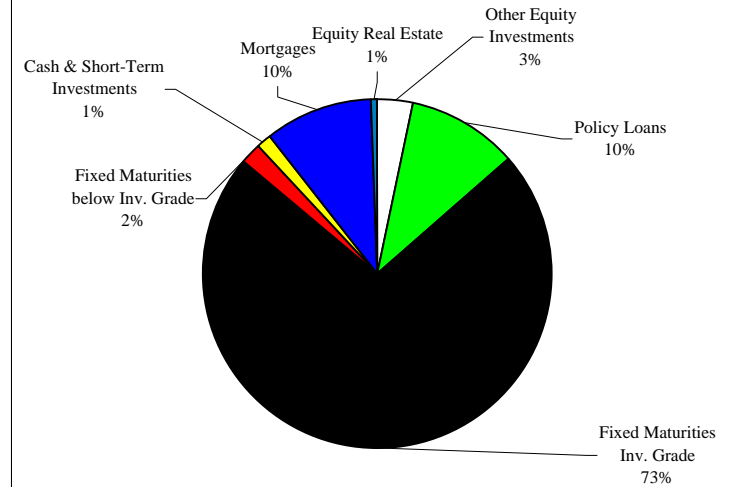


* French GAAP basis.

Includes investment gains (losses)

(\$82.3) (\$11.2) \$61.1 \$64.8 \$46.6 (\$34.2) \$5.0 \$80.0 \$7.6 (\$76.1)

Portfolio Composition by Asset Class of the General Account
(Total Company) As of December 31, 2007



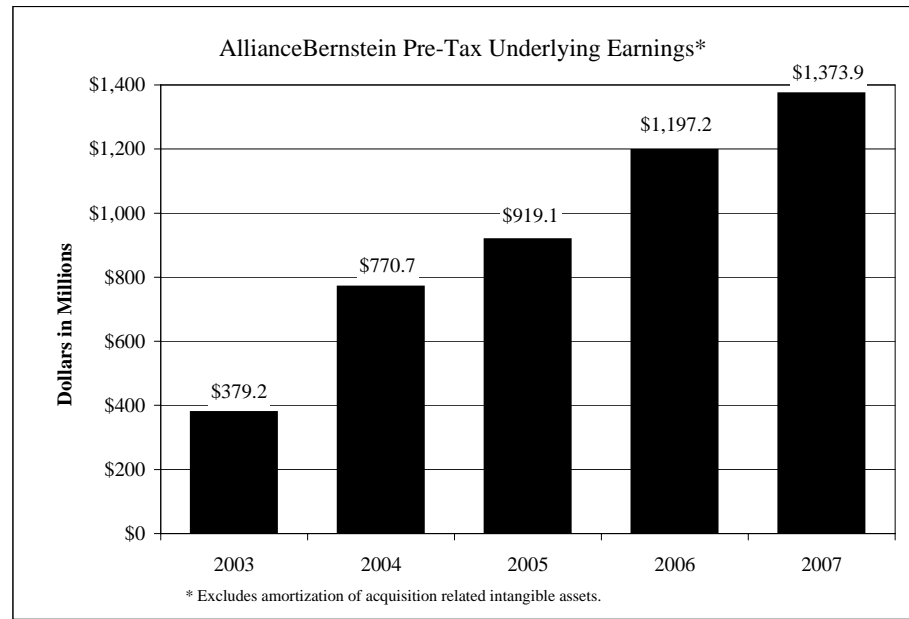
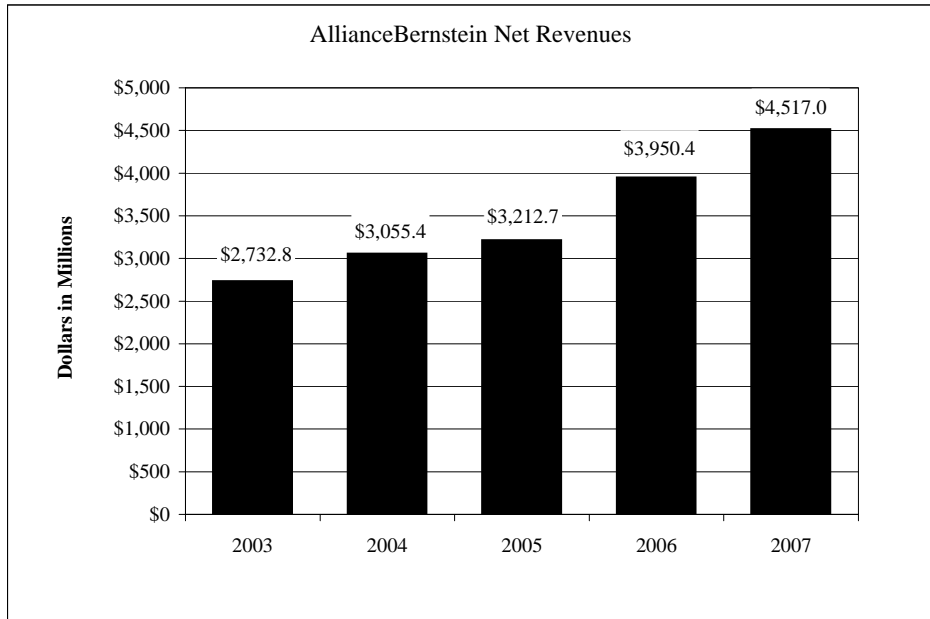
INVESTMENT MANAGEMENT

Reconciliation from AllianceBernstein Underlying Earnings to Contribution to AXA IFRS Underlying Earnings

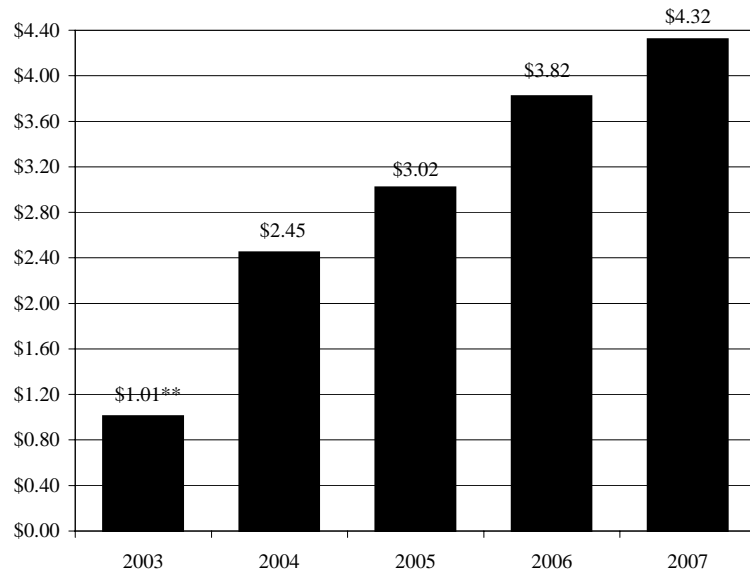
(Dollars in Millions)

1	After-tax underlying earnings as reported by AllianceBernstein <i>(pg. 34, ln 9)</i>
3	Minority interest <i>(pg. 34, ln 12)</i>
4	Other, primarily income taxes <i>(pg. 34, ln 18)</i>
5	Contribution to AXA IFRS Underlying Earnings <i>(pg. 34, ln 19)</i>

<i>Year ended December 31</i>	
<i>2007</i>	<i>2006</i>
\$1,247.2	\$1,121.7
(474.0)	(451.0)
(342.7)	(291.6)
<u>\$430.5</u>	<u>\$379.1</u>

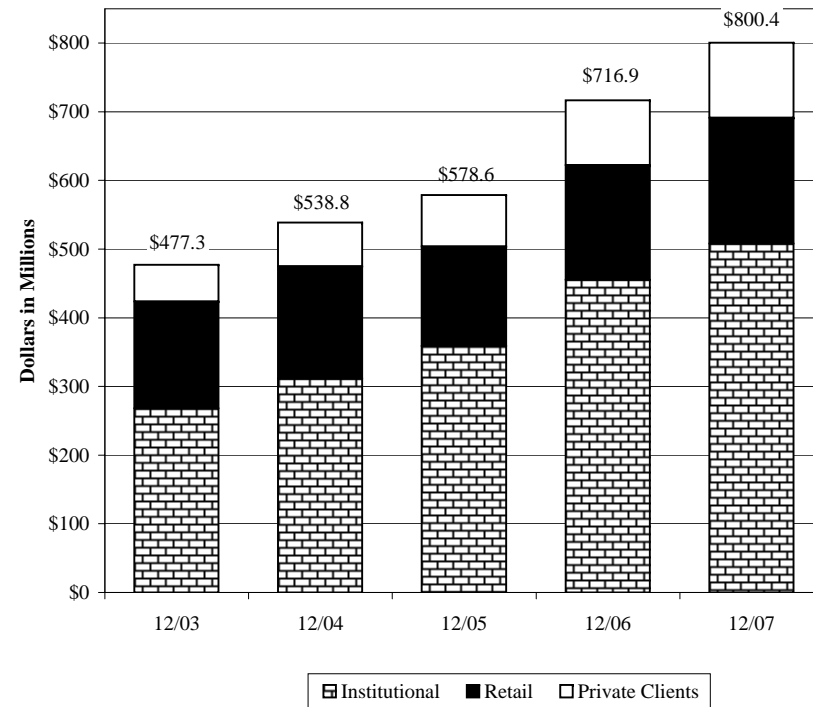


AllianceBernstein Holding - Operating Earnings per Unit *



* Operating earnings are before minority interests and allocation of corporate overhead, and amortization of goodwill through 2002.
 ** Includes \$(1.11) per unit in 2003 related to the accrual for market timing legal matters.

AllianceBernstein - Assets Under Management



AXA FINANCIAL, INC.
ASSETS UNDER MANAGEMENT

<i>Unaudited (Dollars in Millions)</i>		<u>December 31</u> <u>2007</u>	<u>December 31</u> <u>2006</u>	
TOTAL ASSETS BY MANAGER				
<i>ALLIANCEBERNSTEIN</i>				
1	AXAEQ/MONY General Account and the Holding Company	\$35,372	\$37,927	
2	AXAEQ/MONY Separate Accounts - EQAT & VIP	27,003	28,071	
3	AXAEQ/MONY Separate Accounts - other	3,903	3,998	
4	Third Party (incl AXA Enterprise Multimanager mutual funds)	734,112	646,899	
5	Total AllianceBernstein(pg. 35, ln 9)	800,390	716,895	
<i>AXA EQUITABLE /MONY</i>				
6	General Account (non - AllianceBernstein)	18,304	16,761	
7	Separate Accounts - EQAT & VIP (non - AllianceBernstein)	63,180	50,212	
8	Separate Accounts - Other	6,089	6,477	
9	Enterprise mutual funds	662	4,663	
10	Total AXA Equitable/ MONY	88,235	78,113	
<i>TOTAL</i>				
11	AllianceBernstein	800,390	716,895	
12	AXA Equitable/MONY	88,235	78,113	
13	Total Assets Under Management	\$888,625	\$795,008	
TOTAL ASSETS BY ACCOUNT				
14	Total General Account & the Holding Company	\$53,676	\$54,688	
15	Insurance Separate Accounts	100,175	88,758	
16	Third Party (incl AXA Enterprise Multimanager and Enterprise)	734,774	651,562	
17	Total Assets Under Management	\$888,625	\$795,008	12/07 over 12/06
				<u>% Change</u> 11.8%

AXA FINANCIAL, INC.
CONSOLIDATING BALANCE SHEET
IFRS Basis

December 31, 2007

Unaudited (Dollars in Millions)

	<i>Life and Savings</i>	<i>Asset Management</i>	<i>Holding Company</i>	<i>Consolidated</i>
ASSETS				
1 Goodwill	\$ 3,506.4 ⁽¹⁾	\$ 5,660.8 ⁽³⁾	\$ -	\$ 9,167.2
2 Intangible assets	763.3	63.7	-	827.0
Value of business acquired	610.1	-	-	610.1
Other intangible assets	153.2 ⁽²⁾	63.7	-	216.9
3 Real estate	669.0	-	-	669.0
4 Fixed maturities	36,804.2	134.5	5.2	36,943.9
5 Equity investments	1,700.9	767.2	0.2	2,468.3
6 Mortgage, policy and other loans	10,828.7	-	-	10,828.7
7 Total investments from insurance activities	50,002.8	901.7	5.4	50,909.9
8 Separate account assets	100,011.1	-	-	100,011.1
9 Reinsurers' share of insurance liabilities	3,451.8	-	-	3,451.8
10 Receivables from insurance and reinsurance activities	819.4	-	-	819.4
11 Receivables from non-insurance activities	-	3,865.7	-	3,865.7
12 Cash and equivalents	1,413.4	714.7	95.0	2,223.1
13 Other assets *	1,182.7	(111.9)	(636.6)	434.2
14 Deferred acquisition costs	9,450.7	-	-	9,450.7
15 Other prepayments and deferred charges	1,040.0	293.8	223.1	1,556.9
16 Total	117,369.1	4,762.3	(318.5)	121,812.9
17 Total Assets	\$ 171,641.6	\$ 11,388.5	\$ (313.1)	\$ 182,717.0

* Includes certain AXA Group consolidation/elimination adjustments not usually recorded at the AXA Financial level.

(1) Includes \$267.9 goodwill related to MONY acquisition.

(2) Includes \$23.9 intangible assets related to MONY acquisition.

(3) Includes \$483.1 goodwill related to minority interest in Bernstein put option which is marked to market under IFRS.

AXA FINANCIAL, INC.
CONSOLIDATING BALANCE SHEET (continued)

IFRS Basis

December 31, 2007

Unaudited (Dollars in Millions)

	<i>Life and Savings</i>	<i>Asset Management</i>	<i>Holding Company</i>	<i>Consolidated</i>
1 Total minority interests and shareholders' equity	\$ 13,433.8	\$ 6,116.4 ⁽¹⁾	\$ (1,857.2)	\$ 17,693.0
2 Subordinated debt (pg 18, ln 3)	201.7	-	-	201.7
3 Insurance liabilities, gross of reinsurance	51,846.7	-	-	51,846.7
4 Separate account liabilities, gross of reinsurance	100,011.1	-	-	100,011.1
5 Provisions for risks and charges	2,699.9	98.7	50.8	2,849.4
6 Payables arising from insurance and reinsurance activities	1,155.4	-	-	1,155.4
7 Payables arising from non-insurance activities	827.4	3,895.8	58.6	4,781.8
8 Non-subordinated debt instruments issued (pg 18, ln 13)	350.0	533.9	1,397.6	2,281.5
9 Amounts owed to credit institutions	278.6	-	-	278.6
10 Accrued expenses and other liabilities	837.0	743.7	37.1	1,617.8
11 Total liabilities	158,207.8	5,272.1	1,544.1	165,024.0
12 Total Liabilities, Minority Interests, and Shareholders' Equity	\$ 171,641.6	\$ 11,388.5	\$ (313.1)	\$ 182,717.0

(1) Includes a \$483.1 marked to market adjustment on Minority interest Bernstein put option which is marked to market under IFRS.

AXA FINANCIAL, INC.
CONSOLIDATING BALANCE SHEET
IFRS Basis

December 31, 2006

Unaudited (Dollars in Millions)

	<i>Life and Savings</i>	<i>Asset Management</i>	<i>Holding Company</i>	<i>Consolidated</i>
ASSETS				
1 Goodwill	\$ 3,528.3 ⁽¹⁾	\$ 5,629.7 ⁽³⁾	\$ -	\$ 9,158.0
2 Intangible assets	904.3	48.9	-	953.2
Value of business acquired	689.0	-	-	689.0
Other intangible assets	215.3 ⁽²⁾	48.9	-	264.2
3 Real estate	777.1	-	-	777.1
4 Fixed maturities	39,241.4	63.8	5.6	39,310.8
5 Equity investments	1,525.2	683.8	1.4	2,210.4
6 Mortgage, policy and other loans	10,234.8	-	-	10,234.8
7 Total investments from insurance activities	51,778.5	747.6	7.0	52,533.1
8 Separate account assets	88,593.1	-	-	88,593.1
9 Reinsurers' share of insurance liabilities	3,365.5	-	-	3,365.5
10 Receivables from insurance and reinsurance activities	846.7	-	-	846.7
11 Receivables from non-insurance activities	-	5,344.9	-	5,344.9
12 Cash and equivalents	1,087.3	708.0	144.1	1,939.4
13 Other assets *	3,137.8	(172.1)	(541.1)	2,424.6
14 Deferred acquisition costs	8,441.6	-	-	8,441.6
15 Other prepayments and deferred charges	1,413.0	412.4	323.5	2,148.9
16 Total	106,885.0	6,293.2	(73.5)	113,104.7
17 Total Assets	\$ 163,096.1	\$ 12,719.4	\$ (66.5)	\$ 175,749.0

* Includes certain AXA Group consolidation/elimination adjustments not usually recorded at the AXA Financial level.

(1) Includes \$289.6 goodwill related to MONY acquisition.

(2) Includes \$106.3 intangible assets related to MONY acquisition.

(3) Includes \$1,033.6 goodwill related to minority interest in Bernstein put option which is marked to market under IFRS.

AXA FINANCIAL, INC.
CONSOLIDATING BALANCE SHEET (continued)

IFRS Basis

<i>December 31, 2006</i>	<i>Life and</i>	<i>Asset</i>	<i>Holding</i>	
<i>Unaudited (Dollars in Millions)</i>	<i>Savings</i>	<i>Management</i>	<i>Company</i>	<i>Consolidated</i>
1 Total minority interests and shareholders' equity	\$ 12,491.2	\$ 6,184.1	\$ (1,787.7)	\$ 16,887.6
2 Subordinated debt (pg 18, ln 3)	201.7	-	-	201.7
3 Insurance liabilities, gross of reinsurance	52,919.1	-	-	52,919.1
4 Separate account liabilities, gross of reinsurance	88,593.1	-	-	88,593.1
5 Provisions for risks and charges	5,597.2	86.4	113.5	5,797.1
6 Payables arising from insurance and reinsurance activities	1,107.0	-	-	1,107.0
7 Payables arising from non-insurance activities	848.0	5,432.0	47.4	6,327.4
8 Non-subordinated debt instruments issued (pg 18, ln 13)	350.0	334.9	1,405.3	2,090.2
9 Amounts owed to credit institutions	251.4	-	-	251.4
10 Accrued expenses and other liabilities	737.4	682.0	155.0	1,574.4
11 Total liabilities	150,604.9	6,535.3	1,721.2	158,861.4
12 Total Liabilities, Minority Interests, and Shareholders' Equity	\$ 163,096.1	\$ 12,719.4	\$ (66.5)	\$ 175,749.0

AXA FINANCIAL, INC.
NON-SUBORDINATED AND SUBORDINATED DEBT
IFRS Basis

Unaudited (Dollars in Millions)

December 31, 2007 December 31, 2006

SUBORDINATED DEBT

Life and Savings

1	Surplus Notes, 7.70% due 2015	\$	199.8	\$	199.8
2	Surplus Notes, 11.25% due 2024		1.9		1.9
3	Total subordinated debt (pg 15 & 17, ln 2)		<u>201.7</u>		<u>201.7</u>

NON-SUBORDINATED DEBT INSTRUMENTS ISSUED

Life and Savings

4	Promissory Note, due 2008		<u>350.0</u>		<u>350.0</u>
5	Subtotal		<u>350.0</u>		<u>350.0</u>

Asset Management - AllianceBernstein

6	Short-term borrowings		<u>533.9</u>		<u>334.9</u>
7	Subtotal		<u>533.9</u>		<u>334.9</u>

Holding Company

8	Senior Notes, 6.50% due 2008		250.0		249.9
9	Senior Notes, 7.75% due 2010		479.0		478.5
10	Senior Notes, 8.35% due 2010		320.4		328.7
11	Senior Debentures, 7.0%, due 2028		<u>348.2</u>		<u>348.2</u>
12	Subtotal		1,397.6		1,405.3

13	Total non-subordinated debt instruments issued (pg 15 & 17, ln 8)		<u>2,281.5</u>		<u>2,090.2</u>
----	---	--	----------------	--	----------------

14	TOTAL DEBT	\$	<u>2,483.2</u>	\$	<u>2,291.9</u>
----	-------------------	----	----------------	----	----------------

AXA FINANCIAL, INC.
CONSOLIDATING INCOME STATEMENTS - MANAGEMENT FORMAT
IFRS UNDERLYING EARNINGS

<i>Unaudited (Dollars in Millions)</i>	<i>Year ended December 31, 2007</i>				<i>Year ended December 31, 2006</i>			
	<i>Financial</i>	<i>Investment</i>	<i>AXF</i>	<i>Total</i>	<i>Financial</i>	<i>Investment</i>	<i>AXF</i>	<i>Total</i>
	<i>Advisory/ Insurance</i>	<i>Management</i>	<i>Holding Company</i>		<i>Advisory/ Insurance</i>	<i>Management</i>	<i>Holding Company</i>	
REVENUES								
1 Underlying Investment margin	\$964.0	\$64.4	\$0.0	\$1,028.4	\$1,077.4	\$53.4	\$0.0	\$1,130.8
2 Fees and revenues	2,455.2	4,427.4	0.0	6,882.6	2,050.6	3,871.7	0.0	5,922.3
3 Net technical margin	638.7	0.0	0.0	638.7	796.4	0.0	0.0	796.4
4 Net Revenues (1)	4,057.9	4,491.8	0.0	8,549.7	3,924.4	3,925.1	0.0	7,849.5
EXPENSES								
5 Total expenses	2,350.2	3,158.5	212.0	5,720.7	2,249.4	2,768.3	248.7	5,266.4
6 Minority interests	0.0	520.9	0.0	520.9	0.0	479.9	0.0	479.9
7 PRE-TAX UNDERLYING EARNINGS	1,707.7	812.4	(212.0)	2,308.1	1,675.0	676.9	(248.7)	2,103.2
8 Income taxes	497.9	381.9	(71.1)	808.7	419.2	297.8	(78.7)	638.3
9 CONTRIBUTION TO UNDERLYING EARNINGS	\$1,209.8	\$430.5	(\$140.9)	\$1,499.4	\$1,255.8	\$379.1	(\$170.0)	\$1,464.9

(1) Based upon a margin analysis of earnings format which is different from the gross revenues as reported by AXA.

AXA FINANCIAL, INC.
FINANCIAL ADVISORY/INSURANCE
CONSOLIDATING INCOME STATEMENT - MANAGEMENT FORMAT

<i>For the Year ended</i>	<i>December 31</i>		<i>December 31</i>		<i>December 31</i>		<i>December 31</i>		<i>December 31</i>	
	<i>2007</i>	<i>2006</i>	<i>2007</i>	<i>2006</i>	<i>2007</i>	<i>2006</i>	<i>2007</i>	<i>2006</i>	<i>2007</i>	<i>2006</i>
<i>Unaudited (Dollars in Millions)</i>	<i>Traditional Life</i>		<i>Var. & Int Sens Life</i>		<i>Annuities</i>		<i>Other</i>		<i>Total</i>	
1 Underlying Investment margin (pg. 21, ln 3)	\$171.2	\$208.5	\$97.2	\$84.9	\$652.8	\$747.7	\$42.8	\$36.3	\$964.0	\$1,077.4
2 Fees and revenues (pg. 21, ln 7)	72.9	80.3	408.4	343.3	1,632.0	1,285.9	341.9	341.1	2,455.2	2,050.6
3 Net technical margin (pg. 21, ln 11)	217.3	242.4	440.7	413.5	(1.6)	158.3	(17.7)	(17.8)	638.7	796.4
4 Net revenues	<u>461.4</u>	<u>531.2</u>	<u>946.3</u>	<u>841.7</u>	<u>2,283.2</u>	<u>2,191.9</u>	<u>367.0</u>	<u>359.6</u>	<u>4,057.9</u>	<u>3,924.4</u>
5 First year commissions	54.3	49.1	478.5	296.5	673.4	562.2	140.3	148.7	1,346.5	1,056.5
6 Renewal commissions	16.6	17.2	51.4	54.8	160.9	126.3	59.3	55.0	288.2	253.3
7 DAC capitalization	(61.2)	(54.4)	(478.0)	(303.6)	(684.7)	(574.1)	(1.3)	(3.6)	(1,225.2)	(935.7)
8 Net commissions	<u>9.7</u>	<u>11.9</u>	<u>51.9</u>	<u>47.7</u>	<u>149.6</u>	<u>114.4</u>	<u>198.3</u>	<u>200.1</u>	<u>409.5</u>	<u>374.1</u>
9 Compensation & other expenses	215.7	211.7	443.2	419.4	771.8	729.7	130.9	156.2	1,561.6	1,517.0
10 DAC capitalization	(40.6)	(37.7)	(193.9)	(168.4)	(346.0)	(332.6)	(0.1)	(0.9)	(580.6)	(539.6)
11 Net expenses	<u>175.1</u>	<u>174.0</u>	<u>249.3</u>	<u>251.0</u>	<u>425.8</u>	<u>397.1</u>	<u>130.8</u>	<u>155.3</u>	<u>981.0</u>	<u>977.4</u>
12 Amortization of DAC - underlying results	96.6	83.1	253.6	223.9	504.2	506.5	11.5	2.3	865.9	815.8
13 Amortization of VOBA - underlying results	24.2	31.1	14.4	25.9	54.5	23.4	0.7	1.7	93.8	82.1
14 Total expenses	<u>305.6</u>	<u>300.1</u>	<u>569.2</u>	<u>548.5</u>	<u>1,134.1</u>	<u>1,041.4</u>	<u>341.3</u>	<u>359.4</u>	<u>2,350.2</u>	<u>2,249.4</u>
15 Pre-tax IFRS underlying earnings	155.8	231.1	377.1	293.2	1,149.1	1,150.5	25.7	0.2	1,707.7	1,675.0
16 Federal income taxes on underlying earnings (1)	45.4	73.7	110.0	93.5	335.0	366.9	7.5	(114.9)	497.9	419.2
17 After-tax IFRS underlying earnings	110.4	157.4	267.1	199.7	814.1	783.6	18.2	115.1	1,209.8	1,255.8
Post tax adjustments:										
18 Investment gains/losses	1.6	49.5	(19.2)	(2.4)	(26.2)	9.2	(0.9)	(1.1)	(44.7)	55.2
19 Amortization of DAC - investment gains/(losses)	1.0	(0.9)	2.8	0.3	1.7	1.8	0.0	0.0	5.5	1.2
20 Amortization of VOBA - investment gains/(losses)	1.1	(10.5)	0.8	0.1	1.7	(1.0)	0.0	0.0	3.6	(11.4)
21 Capital Gains Pass-Through	(9.1)	(3.7)	0.0	0.0	0.5	(3.9)	0.0	0.0	(8.6)	(7.6)
22 After-tax IFRS Adjusted Earnings	<u>\$105.0</u>	<u>\$191.8</u>	<u>\$251.5</u>	<u>\$197.7</u>	<u>\$791.8</u>	<u>\$789.7</u>	<u>\$17.3</u>	<u>\$114.0</u>	<u>\$1,165.6</u>	<u>\$1,293.2</u>

(1) 2006 "Other" taxes includes a one-time tax benefit amount of \$115 million in connection with the settlement of an IRS audit of the 1997-2001 tax years.

AXA FINANCIAL, INC.
FINANCIAL ADVISORY/INSURANCE
ANALYSIS OF NET REVENUES

<i>For the Year ended</i>	<i>December 31</i>		<i>December 31</i>		<i>December 31</i>		<i>December 31</i>		<i>December 31</i>		
	<i>2007</i>	<i>2006</i>	<i>2007</i>	<i>2006</i>	<i>2007</i>	<i>2006</i>	<i>2007</i>	<i>2006</i>	<i>2007</i>	<i>2006</i>	
<i>Unaudited (Dollars in Millions)</i>	<i>Traditional Life</i>		<i>Var. & Int Sens Life</i>		<i>Annuities</i>		<i>Other</i>		<i>Total</i>		
Investment Margin:											
1	Net investment income	\$1,091.2	\$1,108.9	\$541.5	\$506.4	\$1,520.7	\$1,628.4	\$61.3	\$55.9	\$3,214.7	\$3,299.6
	Interest credited	(920.0)	(900.4)	(444.3)	(421.5)	(867.9)	(880.7)	(18.5)	(19.6)	(\$2,250.7)	(\$2,222.2)
3	Total	<u>171.2</u>	<u>208.5</u>	<u>97.2</u>	<u>84.9</u>	<u>652.8</u>	<u>747.7</u>	<u>42.8</u>	<u>36.3</u>	<u>964.0</u>	<u>1,077.4</u>
Fees and Revenues:											
4	Separate account based	0.0	0.0	142.0	123.6	1,589.0	1,242.1	(0.2)	(0.1)	1,730.8	1,365.6
5	Contractual charges	72.9	80.3	266.4	219.7	43.0	43.8	33.0	24.3	415.3	368.1
6	Mutual fund and other product sales	0.0	0.0	0.0	0.0	0.0	0.0	309.1	316.9	309.1	316.9
7	Total	<u>72.9</u>	<u>80.3</u>	<u>408.4</u>	<u>343.3</u>	<u>1,632.0</u>	<u>1,285.9</u>	<u>341.9</u>	<u>341.1</u>	<u>2,455.2</u>	<u>2,050.6</u>
Net Technical Margin:											
8	Mortality/morbidity spread	134.8	162.4	429.8	361.5	(18.8)	161.0	(12.3)	(23.2)	533.5	661.7
9	Surrender spread	37.2	34.3	41.0	47.7	86.5	73.6	0.9	1.0	165.6	156.6
10	Other benefits, charges & credits	45.3	45.7	(30.1)	4.3	(69.3)	(76.3)	(6.3)	4.4	(60.4)	(21.9)
11	Total	<u>217.3</u>	<u>242.4</u>	<u>440.7</u>	<u>413.5</u>	<u>(1.6)</u>	<u>158.3</u>	<u>(17.7)</u>	<u>(17.8)</u>	<u>638.7</u>	<u>796.4</u>
12	Net Revenues	<u>\$461.4</u>	<u>\$531.2</u>	<u>\$946.3</u>	<u>\$841.7</u>	<u>\$2,283.2</u>	<u>\$2,191.9</u>	<u>\$367.0</u>	<u>\$359.6</u>	<u>\$4,057.9</u>	<u>\$3,924.4</u>

AXA FINANCIAL, INC.
FINANCIAL ADVISORY/INSURANCE SALES - TOTAL

		2006					2007						
<i>Unaudited (Dollars in Millions)</i>		Q1 2006	Q2 2006	1H 2006	Q3 2006	Q4 2006	FY 2006	Q1 2007	Q2 2007	1H 2007	Q3 2007	Q4 2007	FY 2007
Retail													
<i>Life:</i>													
1	Traditional Life	\$283.7	\$284.2	\$567.9	\$263.1	\$307.7	\$1,138.7	\$273.8	\$277.6	\$551.4	\$259.8	\$295.5	\$1,106.7
2	Variable life	312.7	300.2	612.9	285.0	297.4	1,195.3	314.7	324.0	638.7	287.3	309.3	1,235.3
3	Interest sensitive life	110.0	119.7	229.7	131.6	118.3	479.6	114.5	109.0	223.5	135.6	118.4	477.5
4	Total life excluding COLI	706.4	704.1	1,410.5	679.7	723.4	2,813.6	703.0	710.6	1,413.6	682.7	723.2	2,819.5
5	COLI	33.5	18.3	51.8	21.7	32.2	105.7	13.9	19.7	33.6	21.6	11.1	66.3
6	Total Life	739.9	722.4	1,462.3	701.4	755.6	2,919.3	716.9	730.3	1,447.2	704.3	734.3	2,885.8
<i>Annuities(1):</i>													
7	Variable annuities	1,512.9	1,583.5	3,096.4	1,388.4	1,548.5	6,033.3	1,610.8	1,715.2	3,326.0	1,599.6	1,681.2	6,606.8
8	Fixed annuities	28.1	22.2	50.3	26.5	22.3	99.1	23.7	13.2	36.9	20.5	17.5	74.9
9	Group Pensions	87.9	106.0	193.9	84.8	78.9	357.6	96.9	96.4	193.3	86.4	85.7	365.4
<i>Other:</i>													
10	Reinsurance assumed	42.8	41.8	84.6	46.2	43.3	174.1	47.6	38.7	86.3	43.3	42.3	171.9
11	Health and Group Life	23.1	20.6	43.7	21.0	32.1	96.8	21.9	20.4	42.3	18.7	30.4	91.4
12	Total Insurance (3)	2,434.7	2,496.5	4,931.2	2,268.3	2,480.7	9,680.2	2,517.8	2,614.2	5,132.0	2,472.8	2,591.4	10,196.2
<i>Mutual Funds and fee based assets gathered(2):</i>													
13	Proprietary mutual funds (incl. Alliance)	162.2	159.9	322.1	119.9	154.1	596.1	165.1	155.6	320.7	113.1	88.0	521.8
14	Third party mutual funds	546.1	559.2	1,105.3	480.8	583.0	2,169.1	658.7	681.9	1,340.6	428.4	539.7	2,308.7
15	Fee based assets gathered	639.3	591.1	1,230.4	503.1	631.5	2,365.0	688.4	589.3	1,277.7	570.1	972.8	2,820.6
16	Total mutual funds and fee based assets gathered	1,347.6	1,310.2	2,657.8	1,103.8	1,368.6	5,130.2	1,512.2	1,426.8	2,939.0	1,111.6	1,600.5	5,651.1
17	Total Retail Channel	\$3,782.3	\$3,806.7	\$7,589.0	\$3,372.1	\$3,849.3	\$14,810.4	\$4,030.0	\$4,041.0	\$8,071.0	\$3,584.4	\$4,191.9	\$15,847.3
Wholesale													
<i>Annuities:</i>													
<i>Variable annuities:</i>													
18	Financial planners	\$599.9	\$660.5	\$1,260.4	\$617.7	\$682.8	\$2,560.9	\$756.2	\$862.4	\$1,618.6	\$910.4	\$896.0	\$3,425.0
19	Financial institutions	514.9	535.4	1,050.3	468.1	488.8	2,007.2	565.6	654.6	1,220.2	675.8	660.2	2,556.2
20	Broker/dealers	756.7	783.9	1,540.6	706.6	749.9	2,997.1	795.8	888.3	1,684.1	920.5	966.7	3,571.3
21	Total Variable Annuities	1,871.5	1,979.8	3,851.3	1,792.4	1,921.5	7,565.2	2,117.6	2,405.3	4,522.9	2,506.7	2,522.9	9,552.5
22	Fixed annuities	5.8	1.9	7.7	1.6	2.7	12.0	1.4	1.0	2.4	1.6	2.0	6.0
<i>Life:</i>													
23	Traditional life	63.6	65.1	128.7	62.5	66.2	257.4	65.0	69.7	134.7	67.3	71.6	273.6
24	Variable life	4.8	4.5	9.3	3.5	3.7	16.5	6.0	7.6	13.6	8.4	14.9	36.9
25	Interest sensitive life	81.9	87.9	169.8	95.9	123.7	389.4	168.8	177.6	346.4	149.0	139.6	635.0
26	Total life excluding COLI	150.3	157.5	307.8	161.9	193.6	663.3	239.8	254.9	494.7	224.7	226.1	945.5
27	COLI	9.7	3.7	13.4	2.6	5.9	21.9	3.4	1.8	5.2	1.6	1.2	8.0
28	Total Life	160.0	161.2	321.2	164.5	199.5	685.2	243.2	256.7	499.9	226.3	227.3	953.5
29	Other	-	-	-	-	-	-	-	-	-	-	-	-
30	Total mutual funds and fee based assets gathered	222.5	217.4	439.9	189.0	218.6	847.5	210.1	177.0	387.1	73.5	44.7	505.3
31	Total Wholesale Channel	\$2,259.8	\$2,360.3	\$4,620.1	\$2,147.5	\$2,342.3	\$9,109.9	\$2,572.3	\$2,840.0	\$5,412.3	\$2,808.1	\$2,796.9	\$11,017.3
Retail & Wholesale													
32	Life	\$899.9	\$883.6	\$1,783.5	\$865.9	\$955.1	\$3,604.5	\$960.1	\$987.0	\$1,947.1	\$930.6	\$961.6	\$3,839.3
33	Variable annuities	3,384.4	3,563.3	6,947.7	3,180.8	3,470.0	13,598.5	3,728.4	4,120.5	7,848.9	4,106.3	4,204.1	16,159.3
34	Fixed annuities	33.9	24.1	58.0	28.1	25.0	111.1	25.1	14.2	39.3	22.1	19.5	80.9
35	Group Pensions	87.9	106.0	193.9	84.8	78.9	357.6	96.9	96.4	193.3	86.4	85.7	365.4
36	Total annuities	3,506.2	3,693.4	7,199.6	3,293.7	3,573.9	14,067.2	3,850.4	4,231.1	8,081.5	4,214.8	4,309.3	16,605.6
37	Other	65.9	62.4	128.3	67.2	75.4	270.9	69.5	59.1	128.6	62.0	72.7	263.3
38	Mutual funds and fee based assets gathered	1,570.1	1,527.6	3,097.7	1,292.8	1,587.2	5,977.7	1,722.3	1,603.8	3,326.1	1,185.1	1,645.2	6,156.4
39	Total Sales	\$6,042.1	\$6,167.0	\$12,209.1	\$5,519.6	\$6,191.6	\$23,920.3	\$6,602.3	\$6,881.0	\$13,483.3	\$6,392.5	\$6,988.8	\$26,864.6

(1) Annuities are presented net of internal conversions.

(2) Includes sales through brokerage accounts and gross assets gathered through fee based accounts.

(3) Excludes Institutional Separate Accounts and DI ceded

AXA FINANCIAL, INC.
FINANCIAL ADVISORY/INSURANCE SALES - FIRST YEAR

Unaudited (Dollars in Millions)

	2006						2007						
	Q1 2006	Q2 2006	1H 2006	Q3 2006	Q4 2006	FY 2006	Q1 2007	Q2 2007	1H 2007	Q3 2007	Q4 2007	FY 2007	
Retail													
<i>Life:</i>													
1	Traditional Life	\$8.4	\$7.8	\$16.2	\$7.2	\$7.5	\$30.9	\$7.3	\$7.1	\$14.4	\$7.1	\$7.8	\$29.3
2	Variable life	32.4	35.5	67.9	33.0	35.5	136.4	42.3	40.2	82.5	40.1	58.4	181.0
3	Interest sensitive life	43.7	51.4	95.1	35.0	43.4	173.5	40.8	33.5	74.3	35.2	38.2	147.7
4	Total life excluding COLI	84.5	94.7	179.2	75.2	86.4	340.8	90.4	80.8	171.2	82.4	104.4	358.0
5	COLI	6.8	2.0	8.8	2.1	2.3	13.2	2.8	0.9	3.7	1.4	1.4	6.5
6	Total Life	91.3	96.7	188.0	77.3	88.7	354.0	93.2	81.7	174.9	83.8	105.8	364.5
<i>Annuities(1):</i>													
7	Variable annuities	1,016.7	1,074.2	2,090.9	1,017.4	1,081.8	4,190.1	1,109.8	1,189.3	2,299.1	1,212.5	1,186.8	4,698.4
8	Fixed annuities	24.6	20.3	44.9	24.2	20.9	90.0	20.9	11.0	31.9	16.8	15.5	64.2
<i>Other:</i>													
9	Reinsurance assumed	2.1	1.9	4.0	1.8	3.1	8.9	3.0	1.7	4.7	1.5	1.6	7.8
10	Health and Group Life	1.3	1.1	2.4	1.6	0.2	4.2	1.0	1.4	2.4	0.7	0.4	3.5
11	Total Insurance(3)	1,136.0	1,194.2	2,330.2	1,122.3	1,194.7	4,647.2	1,227.9	1,285.1	2,513.0	1,315.3	1,310.1	5,138.4
<i>Mutual Funds and fee based assets gathered(2):</i>													
12	Proprietary mutual funds (incl. Alliance)	162.2	159.9	322.1	119.9	154.1	596.1	165.1	155.6	320.7	113.1	88.0	521.8
13	Third party mutual funds	546.1	559.2	1,105.3	480.8	583.0	2,169.1	658.7	681.9	1,340.6	428.4	539.7	2,308.7
14	Fee based assets gathered	639.3	591.1	1,230.4	503.1	631.5	2,365.0	688.4	589.3	1,277.7	570.1	972.8	2,820.6
15	Total mutual funds and fee based assets gathered	1,347.6	1,310.2	2,657.8	1,103.8	1,368.6	5,130.2	1,512.2	1,426.8	2,939.0	1,111.6	1,600.5	5,651.1
16	Total Retail Channel	\$2,483.6	\$2,504.4	\$4,988.0	\$2,226.1	\$2,563.3	\$9,777.4	\$2,740.1	\$2,711.9	\$5,452.0	\$2,426.9	\$2,910.6	\$10,789.5
Wholesale													
<i>Annuities:</i>													
<i>Variable annuities:</i>													
17	Financial planners	\$582.2	\$641.7	\$1,223.9	\$602.0	\$662.3	\$2,488.2	\$735.5	\$837.3	\$1,572.8	\$886.7	\$876.2	\$3,335.7
18	Financial institutions	494.1	515.4	1,009.5	453.8	470.7	1,934.0	544.2	629.8	1,174.0	653.2	638.9	2,466.1
19	Broker/dealers	722.5	750.2	1,472.7	681.0	716.3	2,870.0	763.7	858.7	1,622.4	895.4	939.9	3,457.7
20	Total Variable Annuities	1,798.8	1,907.3	3,706.1	1,736.8	1,849.3	7,292.2	2,043.4	2,325.8	4,369.2	2,435.3	2,455.0	9,259.5
21	Fixed annuities	5.8	1.9	7.7	1.6	2.7	12.0	1.4	1.0	2.4	1.6	2.0	6.0
<i>Life:</i>													
22	Traditional life	9.7	8.5	18.2	6.8	6.9	31.9	8.0	8.9	16.9	8.3	8.5	33.7
23	Variable life	2.3	1.2	3.5	0.1	1.1	4.7	3.2	5.7	8.9	5.8	13.4	28.1
24	Interest sensitive life	53.1	58.0	111.1	65.0	88.6	264.7	130.9	135.9	266.8	102.8	88.5	458.1
25	Total life excluding COLI	65.1	67.7	132.8	71.9	96.6	301.3	142.1	150.5	292.6	116.9	110.4	519.9
26	COLI	1.1	0.7	1.8	0.4	0.4	2.6	0.1	-	0.1	-	-	0.1
27	Total Life	66.2	68.4	134.6	72.3	97.0	303.9	142.2	150.5	292.7	116.9	110.4	520.0
28	Other	-	-	-	-	-	-	-	-	-	-	-	-
29	Total mutual funds and fee based assets gathered	222.5	217.4	439.9	189.0	218.6	847.5	210.1	177.0	387.1	73.5	44.7	505.3
30	Total Wholesale Channel	\$2,093.3	\$2,195.0	\$4,288.3	\$1,999.7	\$2,167.6	\$8,455.6	\$2,397.1	\$2,654.3	\$5,051.4	\$2,627.3	\$2,612.1	\$10,290.8
Retail & Wholesale													
31	Life	\$157.5	\$165.1	\$322.6	\$149.6	\$185.7	\$657.9	\$235.4	\$232.2	\$467.6	\$200.7	\$216.2	\$884.5
32	Variable annuities	2,815.5	2,981.5	5,797.0	2,754.2	2,931.1	11,482.3	3,153.2	3,515.1	6,668.3	3,647.8	3,641.8	13,957.9
33	Fixed annuities	30.4	22.2	52.6	25.8	23.6	102.0	22.3	12.0	34.3	18.4	17.5	70.2
34	Total annuities	2,845.9	3,003.7	5,849.6	2,780.0	2,954.7	11,584.3	3,175.5	3,527.1	6,702.6	3,666.2	3,659.3	14,028.1
35	Other	3.4	3.0	6.4	3.4	3.3	13.1	4.0	3.1	7.1	2.2	2.0	11.3
36	Mutual funds and fee based assets gathered	1,570.1	1,527.6	3,097.7	1,292.8	1,587.2	5,977.7	1,722.3	1,603.8	3,326.1	1,185.1	1,645.2	6,156.4
37	Total Sales	\$4,576.9	\$4,699.4	\$9,276.3	\$4,225.8	\$4,730.9	\$18,233.0	\$5,137.2	\$5,366.2	\$10,503.4	\$5,054.2	\$5,522.7	\$21,080.3

(1) Annuities are presented net of internal conversions.

(2) Includes sales through brokerage accounts and gross assets gathered through fee based accounts.

(3) Excludes Institutional Separate Accounts and DI ceded

AXA FINANCIAL, INC.
CONSOLIDATED PRODUCT SALES

Unaudited (Dollars in Millions)

		2006					2007						
		Q1 2006	Q2 2006	1H 2006	Q3 2006	Q4 2006	FY 2006	Q1 2007	Q2 2007	1H 2007	Q3 2007	Q4 2007	FY 2007
1	Life (pg. 22, ln 32)	\$899.9	\$883.6	\$1,783.5	\$865.9	\$955.1	\$3,604.5	\$960.1	\$987.0	\$1,947.1	\$930.6	\$961.6	\$3,839.3
2	Annuities (pg. 22, ln 36)	3,506.2	3,693.4	7,199.6	3,293.7	3,573.9	14,067.2	3,850.4	4,231.1	8,081.5	4,214.8	4,309.3	16,605.6
3	Other (pg. 22, ln 37)	65.9	62.4	128.3	67.2	75.4	270.9	69.5	59.1	128.6	62.0	72.7	263.3
4	Mutual funds and fee based assets gathered (pg. 22, ln 38)	1,570.1	1,527.6	3,097.7	1,292.8	1,587.2	5,977.7	1,722.3	1,603.8	3,326.1	1,185.1	1,645.2	6,156.4
5	Total Financial Advisory/Insurance Sales	6,042.1	6,167.0	12,209.1	5,519.6	6,191.6	23,920.3	6,602.3	6,881.0	13,483.3	6,392.5	6,988.8	26,864.6
6	AllianceBernstein new business/sales (pg. 35, ln 3)	26,310.0	32,862.0	59,172.0	22,900.0	30,477.0	112,549.0	38,099.0	32,580.0	70,679.0	32,399.0	32,164.0	135,242.0
7	Total Gross Sales	32,352.1	39,029.0	71,381.1	28,419.6	36,668.6	136,469.3	44,701.3	39,461.0	84,162.3	38,791.5	39,152.8	162,106.6
8	less: Fin. Adv./Ins. sales of AllianceBernstein mutual funds	(127.3)	(130.7)	(258.0)	(98.9)	(130.3)	(487.2)	(142.6)	(139.0)	(281.6)	(109.0)	(88.0)	(478.6)
9	less: AllianceBernstein sales of EQAT and Multimanager funds	(996.6)	(1,238.0)	(2,234.6)	(792.3)	(821.4)	(3,848.3)	(851.7)	(925.7)	(1,777.4)	(735.3)	(882.3)	(3,395.0)
10	Consolidated AXA Financial Sales	\$31,228.2	\$37,660.3	\$68,888.5	\$27,528.4	\$35,716.9	\$132,133.8	\$43,707.0	\$38,396.3	\$82,103.3	\$37,947.2	\$38,182.5	\$158,233.0
11	Investment products (AllianceBernstein) (line 6, 8 & 9)	\$25,186.1	\$31,493.3	\$56,679.4	\$22,008.8	\$29,525.3	\$108,213.5	\$37,104.7	\$31,515.3	\$68,620.0	\$31,554.7	\$31,193.7	\$131,368.4
12	Other (line 3)	65.9	62.4	128.3	67.2	75.4	270.9	69.5	59.1	128.6	62.0	72.7	263.3
13	Annuities (line 2)	3,506.2	3,693.4	7,199.6	3,293.7	3,573.9	14,067.2	3,850.4	4,231.1	8,081.5	4,214.8	4,309.3	16,605.6
14	Life (line 1)	899.9	883.6	1,783.5	865.9	955.1	3,604.5	960.1	987.0	1,947.1	930.6	961.6	3,839.3
15	Mutual fund sales (line 4)	1,570.1	1,527.6	3,097.7	1,292.8	1,587.2	5,977.7	1,722.3	1,603.8	3,326.1	1,185.1	1,645.2	6,156.4
16	Consolidated AXA Financial Sales	\$31,228.2	\$37,660.3	\$68,888.5	\$27,528.4	\$35,716.9	\$132,133.8	\$43,707.0	\$38,396.3	\$82,103.3	\$37,947.2	\$38,182.5	\$158,233.0

AXA FINANCIAL, INC.
FINANCIAL ADVISORY/INSURANCE
DEFERRED POLICY ACQUISITION COSTS

<i>Six months ended</i>	2006		2007	
	<i>June 30</i>	<i>December 31</i>	<i>June 30</i>	<i>December 31</i>
<i>Unaudited (Dollars in Millions)</i>				
TRADITIONAL LIFE				
1 <i>Beginning balance</i>	\$835.3	\$1,012.3	\$876.4	\$989.4
2 <i>Capitalization</i>	46.8	45.2	49.3	52.5
3 <i>Amortization - operating results</i>	(33.6)	(48.7)	(43.7)	(52.9)
4 <i>Amortization - realized capital (gain) loss</i>	1.9	(3.3)	(3.3)	4.8
5 <i>Change in DAC - unrealized capital gains</i>	161.9	(129.1)	110.7	(67.2)
6 <i>Ending Balance</i>	<u>\$1,012.3</u>	<u>\$876.4</u>	<u>\$989.4</u>	<u>\$926.6</u>
VARIABLE AND INTEREST- SENSITIVE LIFE				
7 <i>Beginning balance</i>	\$3,125.8	\$3,278.3	\$3,377.9	\$3,637.4
8 <i>Capitalization</i>	220.1	251.9	361.0	310.9
9 <i>Amortization - operating results</i>	(83.4)	(140.6)	(110.4)	(144.3)
10 <i>Amortization - realized capital (gain) loss</i>	0.2	0.3	0.2	4.1
11 <i>Change in DAC - unrealized capital gains</i>	15.6	(12.0)	8.7	(2.0)
12 <i>Ending Balance</i>	<u>\$3,278.3</u>	<u>\$3,377.9</u>	<u>\$3,637.4</u>	<u>\$3,806.1</u>
ANNUITIES				
13 <i>Beginning balance</i>	\$3,679.4	\$4,054.4	\$4,141.7	\$4,419.4
14 <i>Capitalization</i>	453.1	452.7	482.9	548.1
15 <i>Amortization - operating results</i>	(214.3)	(293.2)	(258.3)	(274.8)
16 <i>Amortization - realized capital (gain) loss</i>	1.2	1.7	(0.2)	2.8
17 <i>Change in DAC - unrealized capital gains</i>	135.0	(73.9)	53.3	(13.0)
18 <i>Ending Balance</i>	<u>\$4,054.4</u>	<u>\$4,141.7</u>	<u>\$4,419.4</u>	<u>\$4,682.5</u>

AXA FINANCIAL, INC.
FINANCIAL ADVISORY/INSURANCE
DEFERRED POLICY ACQUISITION COSTS

<i>Six months ended</i>	2006		2007	
	<i>June 30</i>	<i>December 31</i>	<i>June 30</i>	<i>December 31</i>
<i>Unaudited (Dollars in Millions)</i>				
OTHER				
1 <i>Beginning balance</i>	\$43.1	\$44.9	\$45.6	\$47.2
2 <i>Capitalization</i>	2.0	2.5	1.9	(0.5)
3 <i>Amortization - operating results</i>	(1.0)	(1.3)	(1.0)	(10.5)
4 <i>Amortization - realized capital (gain) loss</i>	0.0	0.0	0.0	0.0
5 <i>Change in DAC - unrealized capital gains</i>	0.8	(0.5)	0.7	(0.7)
6 <i>Ending Balance</i>	<u>\$44.9</u>	<u>\$45.6</u>	<u>\$47.2</u>	<u>\$35.5</u>
TOTAL				
7 <i>Beginning balance</i>	\$7,683.6	\$8,389.9	\$8,441.6	\$9,093.4
8 <i>Capitalization</i>	722.0	752.3	895.1	911.0
9 <i>Amortization - operating results</i>	(332.3)	(483.8)	(413.4)	(482.5)
10 <i>Amortization - realized capital (gain) loss</i>	3.3	(1.3)	(3.3)	11.7
11 <i>Change in DAC - unrealized capital gains</i>	313.3	(215.5)	173.4	(82.9)
12 <i>Ending Balance</i>	<u>\$8,389.9</u>	<u>\$8,441.6</u>	<u>\$9,093.4</u>	<u>\$9,450.7</u>

AXA FINANCIAL, INC.
FINANCIAL ADVISORY/INSURANCE
FUTURE POLICY BENEFITS &
POLICYHOLDERS' ACCOUNT BALANCES*

Six months ended
Unaudited (Dollars in Millions)

TRADITIONAL LIFE

General Account

	2006		2007	
	June 30	December 31	June 30	December 31
1 <i>Beginning balance</i>	\$16,802.0	\$16,752.8	\$16,744.5	\$16,683.1
2 Direct premiums and other deposits	710.2	713.2	699.2	706.9
3 Change in market value / interest credited	329.1	329.0	327.0	342.0
4 Surrender benefits	(320.3)	(313.2)	(322.4)	(307.1)
5 Policy charges and other benefits	(768.2)	(737.3)	(765.2)	(752.1)
6 <i>Ending Balance</i>	\$16,752.8	\$16,744.5	\$16,683.1	\$16,672.8

VARIABLE AND INTEREST - SENSITIVE LIFE

Separate Accounts

7 <i>Beginning balance</i>	\$11,935.0	\$11,971.7	\$13,054.8	\$13,641.1
8 Direct premiums and other deposits	623.1	603.3	639.5	609.3
9 Change in market value / interest credited	226.7	1,212.0	783.8	66.3
10 Surrender benefits	(329.6)	(326.7)	(371.4)	(323.1)
11 Policy charges and other benefits	(406.9)	(412.7)	(417.6)	(408.7)
12 Transfers	(76.6)	7.2	(48.0)	(66.2)
13 <i>Ending Balance</i>	\$11,971.7	\$13,054.8	\$13,641.1	\$13,518.7

General Account

14 <i>Beginning balance</i>	\$9,056.3	\$9,289.0	\$9,457.6	\$9,740.3
15 Direct premiums and other deposits	459.9	494.2	617.4	566.1
16 Change in market value / interest credited	209.4	210.0	219.3	225.8
17 Surrender benefits	(153.0)	(150.7)	(174.4)	(154.8)
18 Policy charges and other benefits	(360.2)	(377.7)	(427.6)	(458.1)
19 Transfers	76.6	(7.2)	48.0	66.2
20 <i>Ending Balance</i>	\$9,289.0	\$9,457.6	\$9,740.3	\$9,985.5

*Excluding Institutional Separate Accounts, Claims and Dividend Liabilities.

AXA FINANCIAL, INC.
FINANCIAL ADVISORY/INSURANCE
FUTURE POLICY BENEFITS &
POLICYHOLDERS' ACCOUNT BALANCES* (continued)

Six months ended
Unaudited (Dollars in Millions)

	2006		2007	
	<u>June 30</u>	<u>December 31</u>	<u>June 30</u>	<u>December 31</u>
ANNUITIES				
Separate Accounts				
1	\$57,272.3	\$61,159.3	\$70,374.2	\$78,079.0
2	5,701.8	5,438.5	6,539.9	6,895.5
3	1,560.5	6,642.4	4,762.7	147.3
4	(2,617.2)	(2,710.7)	(3,344.6)	(3,521.5)
5	(1,400.0)	(988.7)	(1,180.7)	(1,302.3)
6	641.9	833.4	927.5	1,021.0
7	<u>\$61,159.3</u>	<u>\$70,374.2</u>	<u>\$78,079.0</u>	<u>\$81,319.0</u>
General Account				
8	\$23,695.4	\$23,194.0	\$22,080.9	\$20,852.0
9	1,815.8	1,695.9	1,757.6	1,807.7
10	455.7	424.2	430.0	445.0
11	(1,290.2)	(1,446.0)	(1,677.5)	(1,158.8)
12	(840.8)	(953.8)	(811.5)	(448.4)
13	(641.9)	(833.4)	(927.5)	(1,021.0)
14	<u>\$23,194.0</u>	<u>\$22,080.9</u>	<u>\$20,852.0</u>	<u>\$20,476.5</u>
OTHER				
General Account				
15	\$648.0	\$660.4	\$662.9	\$673.9
16	192.1	206.3	188.3	194.1
17	9.5	10.0	9.6	9.0
18	(1.9)	(3.3)	(4.3)	(3.9)
19	(187.3)	(210.5)	(182.6)	(201.4)
20	0.0	0.0	0.0	0.0
21	<u>\$660.4</u>	<u>\$662.9</u>	<u>\$673.9</u>	<u>\$671.7</u>

*Excluding Institutional Separate Accounts, Claims and Dividend Liabilities.

AXA FINANCIAL, INC.
FINANCIAL ADVISORY/INSURANCE
FUTURE POLICY BENEFITS &
POLICYHOLDERS' ACCOUNT BALANCES* (continued)

Six months ended
Unaudited (Dollars in Millions)

	2006		2007	
	<i>June 30</i>	<i>December 31</i>	<i>June 30</i>	<i>December 31</i>
TOTAL				
Separate Accounts				
1 <i>Beginning balance</i>	\$69,207.3	\$73,131.0	\$83,429.0	\$91,720.1
2 <i>Direct premiums and other deposits</i>	6,324.9	6,041.8	7,179.4	7,504.8
3 <i>Change in market value / interest credited</i>	1,787.2	7,854.4	5,546.5	213.6
4 <i>Surrender benefits</i>	(2,946.8)	(3,037.4)	(3,716.0)	(3,844.6)
5 <i>Policy charges and other benefits</i>	(1,806.9)	(1,401.4)	(1,598.3)	(1,711.0)
6 <i>Transfers</i>	565.3	840.6	879.5	954.8
7 <i>Ending Balance</i>	<u>\$73,131.0</u>	<u>\$83,429.0</u>	<u>\$91,720.1</u>	<u>\$94,837.7</u>
General Account				
8 <i>Beginning balance</i>	\$50,201.7	\$49,896.2	\$48,945.9	\$47,949.3
9 <i>Direct premiums and other deposits</i>	3,178.0	3,109.6	3,262.5	3,274.8
10 <i>Change in market value / interest credited</i>	1,003.7	973.2	985.9	1,021.8
11 <i>Surrender benefits</i>	(1,765.4)	(1,913.2)	(2,178.6)	(1,624.6)
12 <i>Policy charges, other benefits and other</i>	(2,156.5)	(2,279.3)	(2,186.9)	(1,860.0)
13 <i>Transfers</i>	(565.3)	(840.6)	(879.5)	(954.8)
14 <i>Ending Balance</i>	<u>\$49,896.2</u>	<u>\$48,945.9</u>	<u>\$47,949.3</u>	<u>\$47,806.5</u>

*Excluding Institutional Separate Accounts, Claims and Dividend Liabilities.

AXA FINANCIAL, INC.
FINANCIAL ADVISORY/INSURANCE
GMDB/GMIB

<i>Unaudited (Dollars in Millions)</i>	<i>December 31, 2007</i>				
	<i>Return of Premium</i>	<i>Variable Contracts with Guarantees(1)</i>			<i>Total</i>
		<i>Ratchet</i>	<i>Roll-Up</i>	<i>Combo</i>	
GMDB					
1 Account value	\$40,408	\$10,546	\$7,589	\$32,018	\$90,561
2 Net amount at risk, gross	242	309	1,404	561	2,516
3 Net amount at risk, net of amounts reinsured	242	255	853	557	1,907
4 IFRS reserves, net of amounts reinsured and related hedging activity					114
GMIB					
5 Account value	N/A	N/A	4,904	42,701	\$47,605
6 Net amount at risk, gross	N/A	N/A	274	0	274
7 Net amount at risk, net of amounts reinsured	N/A	N/A	71	0	71
8 IFRS reserves, net of amounts reinsured and related hedging activity					45

<i>Unaudited (Dollars in Millions)</i>	<i>December 31, 2006</i>				
	<i>Return of Premium</i>	<i>Variable Contracts with Guarantees(1)</i>			<i>Total</i>
		<i>Ratchet</i>	<i>Roll-Up</i>	<i>Combo</i>	
GMDB					
9 Account value	\$38,105	\$10,228	\$7,972	\$24,014	\$80,319
10 Net amount at risk, gross	313	424	1,447	93	2,277
11 Net amount at risk, net of amounts reinsured	312	276	883	41	1,512
12 IFRS reserves, net of amounts reinsured and related hedging activity					(43)
GMIB					
13 Account value	N/A	N/A	\$5,540	\$32,619	\$38,159
14 Net amount at risk, gross	N/A	N/A	277	0	277
15 Net amount at risk, net of amounts reinsured	N/A	N/A	71	0	71
16 IFRS reserves, net of amounts reinsured and related hedging activity					(213)

(1) Return of Premium: the benefit is the greater of current account value and premiums paid (adjusted for withdrawals).

Ratchet: the benefit is the greatest of current account value, premiums paid (adjusted for withdrawals), and the highest account value on any anniversary up to contractually specified ages (adjusted for withdrawals)

Roll-Up: the benefit is the greater of current account value and premiums paid (adjusted for withdrawals) accumulated at contractually specified interest rates up to specified ages.

Combo: the benefit is the greater of the ratchet benefit or the roll-up benefit which may include a five year or an annual reset.

AXA FINANCIAL, INC.
UNDERLYING INVESTMENT RESULTS
BY ASSET CATEGORY
ANNUALIZED YIELDS

<i>Unaudited (Dollars in Millions)</i>	<i>At or for the six months ended December 31</i>						<i>At or for the year ended December 31</i>					
	<i>2007</i>			<i>2006</i>			<i>2007</i>			<i>2006</i>		
	<i>Yield</i>	<i>Amount</i>	<i>Percent of Total</i>	<i>Yield</i>	<i>Amount</i>	<i>Percent of Total</i>	<i>Yield</i>	<i>Amount</i>	<i>Percent of Total</i>	<i>Yield</i>	<i>Amount</i>	<i>Percent of Total</i>
	<i>Total Company</i>						<i>Total Company</i>					
FIXED MATURITIES												
Investment Grade												
1 Underlying Income	6.00%	\$1,092.9		6.19%	\$1,163.6		6.01%	\$2,213.5		6.17%	\$2,319.8	
2 Investment gains (losses)	-0.21%	(37.3)		-0.04%	(8.1)		-0.10%	(35.6)		-0.11%	(39.8)	
3 Total	5.79%	\$1,055.6		6.15%	\$1,155.5		5.91%	\$2,177.9		6.06%	\$2,280.0	
4 Ending Assets		\$37,101.3	73%		\$38,680.4	75%		\$37,101.3	73%		\$38,680.4	75%
Below Investment Grade												
5 Underlying Income	7.55%	\$31.0		8.02%	\$42.8		8.09%	\$66.3		8.13%	\$90.3	
6 Investment gains (losses)	-14.31%	(60.4)		-1.29%	(6.7)		-7.90%	(64.7)		1.04%	11.2	
7 Total	-6.76%	(\$29.4)		6.73%	\$36.1		0.19%	\$1.6		9.17%	\$101.5	
8 Ending Assets		\$896.2	2%		\$995.3	2%		\$896.2	2%		\$995.3	2%
MORTGAGES												
9 Underlying Income	7.70%	\$178.0		8.25%	\$183.8		7.49%	\$342.0		8.12%	\$364.0	
10 Investment gains (losses)	0.24%	5.4		0.05%	1.0		0.22%	9.4		0.06%	2.6	
11 Total	7.94%	\$183.4		8.30%	\$184.8		7.71%	\$351.4		8.18%	\$366.6	
12 Ending Assets		\$5,113.9	10%		\$4,681.4	9%		\$5,113.9	10%		\$4,681.4	9%
EQUITY REAL ESTATE												
13 Underlying Income	19.91%	\$30.4		13.09%	\$25.9		18.29%	\$61.2		15.74%	\$72.8	
14 Investment gains (losses)	11.37%	15.7		57.16%	92.1		6.71%	20.7		27.49%	111.0	
15 Total	31.28%	\$46.1		70.25%	\$118.0		25.00%	\$81.9		43.23%	\$183.8	
16 Ending Assets		\$313.6	1%		\$409.5	1%		\$313.6	1%		\$409.5	1%

AXA FINANCIAL, INC.
UNDERLYING INVESTMENT RESULTS
BY ASSET CATEGORY
ANNUALIZED YIELDS (continued)

Unaudited (Dollars in Millions)	At or for the six months ended December 31						At or for the year ended December 31					
	2007			2006			2007			2006		
	Yield	Amount	Percent of Total	Yield	Amount	Percent of Total	Yield	Amount	Percent of Total	Yield	Amount	Percent of Total
	<i>Total Company</i>						<i>Total Company</i>					
OTHER EQUITY INVESTMENTS												
1 Underlying Income	16.37%	\$127.9		15.92%	\$109.6		15.63%	\$237.9		13.74%	\$185.3	
2 Investment gains (losses)	0.07%	0.5		0.26%	1.7		0.12%	1.7		0.00%	0.0	
3 Total	16.44%	\$128.4		16.18%	\$111.3		15.75%	\$239.6		13.74%	\$185.3	
4 Ending Assets		\$1,728.2	3%		\$1,517.9	2%		\$1,728.2	3%		\$1,517.9	2%
POLICY LOANS												
5 Income	6.48%	\$162.3		6.43%	\$160.2		6.43%	\$321.8		6.38%	\$316.7	
6 Ending Assets		\$5,194.6	10%		\$5,165.1	10%		\$5,194.6	10%		\$5,165.1	10%
CASH & SHORT-TERM INVESTMENTS												
7 Underlying Income	8.50%	\$44.5		7.25%	\$39.2		7.81%	\$82.2		6.87%	\$78.6	
Investment gains (losses)	0.00%	0.0		0.00%	0.0		0.00%	0.0		0.00%	0.0	
Total	8.50%	\$44.5		7.25%	\$39.2		7.81%	\$82.2		6.87%	\$78.6	
8 Ending Assets		\$1,245.3	2%		\$985.4	2%		\$1,245.3	2%		\$985.4	2%
DEBT & OTHER												
9 Interest expense and other	6.86%	(\$20.1)		-8.10%	(\$24.6)		7.30%	(\$43.6)		-8.40%	(\$63.5)	
10 Investment gains (losses)	0.00%	0.0		0.00%	0.0		0.00%	0.0		0.00%	0.0	
Total	6.86%	\$(20.1)		-8.10%	\$(24.6)		7.30%	\$(43.6)		-8.40%	\$(63.5)	
11 Ending Assets (Liabilities)		(\$527.8)	-1%		(\$630.4)	-1%		(\$527.8)	-1%		(\$630.4)	-1%
TOTAL												
12 Underlying Income	6.68%	\$1,646.9		6.74%	\$1,700.5		6.63%	\$3,281.3		6.66%	\$3,364.0	
13 Investment fees	-0.14%	(35.4)		-0.13%	(32.4)		-0.13%	(66.6)		-0.13%	(64.4)	
14 Net Investment Income	6.54%	1,611.5		6.61%	1,668.1		6.50%	3,214.7		6.53%	3,299.6	
15 Investment gains (losses)	-0.32%	(76.1)		0.32%	80.0		-0.15%	(68.5)		0.18%	85.0	
16 Net Investment Results	6.22%	\$1,535.4		6.93%	\$1,748.1		6.35%	\$3,146.2		6.71%	\$3,384.6	
17 Ending Net Assets		\$51,065.3	100%		\$51,804.6	100%		\$51,065.3	100%		\$51,804.6	100%

AXA FINANCIAL, INC.
ANALYSIS OF GENERAL ACCOUNT (TOTAL COMPANY)
INVESTED ASSETS

<i>Unaudited (Dollars in Millions)</i>	<i>December 31</i>	<i>December 31</i>
	<i>2007</i>	<i>2006</i>
SUMMARY OF FIXED MATURITIES		
1 Public securities	\$29,677.8	\$31,903.3
2 Private securities	7,972.4	7,304.9
3 Total amortized cost	37,650.2	39,208.2
4 Valuation allowance	(150.1)	(67.5)
5 Amortized Cost Less Valuation Allowance	<u>\$37,500.1</u>	<u>\$39,140.7</u>
SUMMARY OF MORTGAGES		
<i>COMMERCIAL</i>		
6 Amortized cost	\$3,611.1	\$3,094.2
7 Valuation allowance	(1.4)	(12.9)
8 Carrying Value	<u>\$3,609.7</u>	<u>\$3,081.3</u>
<i>AGRICULTURAL</i>		
9 Amortized cost	\$1,602.9	\$1,586.2
10 Valuation allowance	0.0	(0.1)
11 Carrying Value	<u>\$1,602.9</u>	<u>\$1,586.1</u>
<i>TOTAL</i>		
12 Amortized cost	\$5,214.0	\$4,680.4
13 Valuation allowance	(1.4)	(13.0)
14 Carrying Value	<u>\$5,212.6</u>	<u>\$4,667.4</u>
SUMMARY OF EQUITY REAL ESTATE		
15 Wholly owned	\$453.8	\$475.6
16 Joint ventures	93.2	94.9
17 Commercial foreclosed	124.4	217.5
18 Agricultural foreclosed	0.3	0.0
19 Total amortized cost	671.7	788.0
20 Valuation allowance	(2.4)	(10.5)
21 Carrying Value	<u>\$669.3</u>	<u>\$777.5</u>

AXA FINANCIAL, INC.
INVESTMENT MANAGEMENT
STATEMENT OF CONTRIBUTION TO AXA IFRS UNDERLYING EARNINGS

<i>Unaudited (Dollars in Millions)</i>	<i>Year ended</i>	
	<i>December 31</i>	<i>December 31</i>
	<i>2007</i>	<i>2006</i>
1 Underlying investment margin	\$89.6	\$78.7
2 Fee income	4,427.4	3,871.7
3 Net revenues	4,517.0	3,950.4
4 Employee compensation and benefit costs	1,833.8	1,547.6
Other	1,309.3	1,205.6
6 Total expenses	3,143.1	2,753.2
7 Pre-tax earnings before income taxes	1,373.9	1,197.2
8 Income taxes	126.7	75.5
9 AllianceBernstein Legal Entity Net Income Before Amortization of Intangible Assets	\$1,247.2	\$1,121.7
10 Minority interests before tax	(520.9)	(479.9)
11 Tax on minority interests	46.9	28.9
12 Minority interests, net of tax	(474.0)	(451.0)
Allocation of Holding Company (pre-tax):		
13 Investment margin	(25.2)	(25.3)
14 Fee income	0.0	0.0
15 Expenses	(15.4)	(15.1)
16 Total allocation	(40.6)	(40.4)
17 Tax on allocation and partnership results	(302.1)	(251.2)
18 After-tax allocation of the Holding Company	(342.7)	(291.6)
19 Contribution to AXA IFRS Underlying Earnings	\$430.5	\$379.1

AXA FINANCIAL, INC.
ALLIANCEBERNSTEIN
ASSETS UNDER MANAGEMENT RECONCILIATION

<i>Year ended December 31, 2007</i>	<i>Institutional</i>		<i>Private</i>	
<i>Unaudited (Dollars in Millions)</i>	<i>Money</i>	<i>Retail</i>	<i>Clients</i>	<i>Total</i>
	<i>Management</i>			
1 Beginning of Period	\$455,069	\$166,928	\$94,898	\$716,895
2 Change in scope affecting opening balance	26	0	0	26
3 New business/sales	70,744	46,211	18,287	135,242
4 Terminations/redemptions	(33,231)	(37,001)	(4,486)	(74,718)
5 Cash flow	(19,849)	(3,343)	(5,169)	(28,361)
6 Transfers	(144)	(552)	696	0
7 Appreciation(depreciation)	35,466	10,922	4,918	51,306
8 Net change	<u>53,012</u>	<u>16,237</u>	<u>14,246</u>	<u>83,495</u>
9 End of Period	<u>\$508,081</u>	<u>\$183,165</u>	<u>\$109,144</u>	<u>\$800,390</u>

**AXA FINANCIAL, INC.
ALLIANCEBERNSTEIN
ASSETS UNDER MANAGEMENT BY CATEGORY**

<i>December 31, 2007</i>		<i>Institutional</i>		<i>Private</i>	
<i>Unaudited (Dollars in Billions)</i>		<i>Money</i>	<i>Retail</i>	<i>Clients</i>	<i>Total</i>
		<i>Management</i>			
Equity					
<i>Growth</i>					
1	Domestic Growth	\$31,908	\$24,637	\$16,004	\$72,549
2	Global & International	88,691	23,530	12,175	124,396
<i>Value</i>					
3	Domestic Value	49,235	33,488	25,259	107,982
4	Global & International	192,472	56,560	25,497	274,529
Fixed Income					
5	Domestic	73,240	10,627	29,498	113,365
6	Global & International	53,978	29,855	676	84,509
Passive					
7	Domestic	12,426	4,468	25	16,919
8	Global & International	<u>6,131</u>	<u>0</u>	<u>10</u>	<u>6,141</u>
Total					
9	Domestic	166,809	73,220	70,786	310,815
10	Global & International	<u>341,272</u>	<u>109,945</u>	<u>38,358</u>	<u>489,575</u>
11	Total	<u><u>\$508,081</u></u>	<u><u>\$183,165</u></u>	<u><u>\$109,144</u></u>	<u><u>\$800,390</u></u>